



Barkston Gardens, SW5

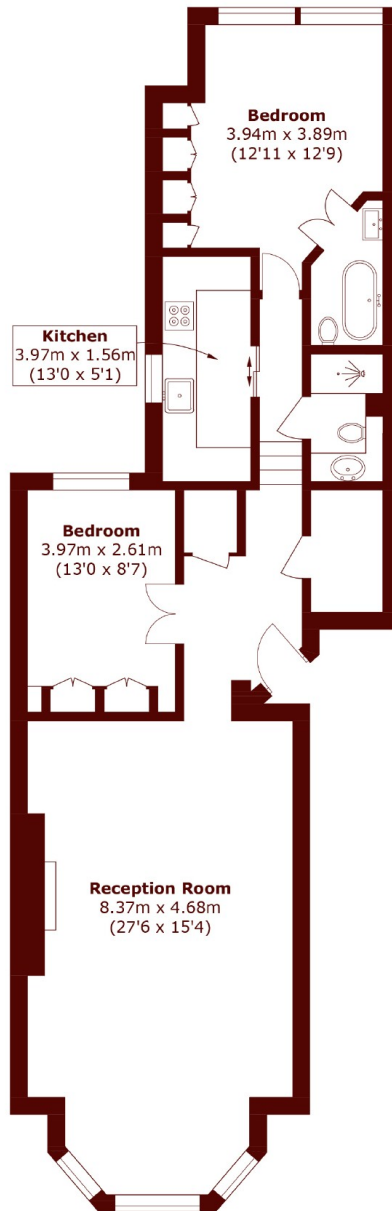
£1,500,000 per week (pcm)



- Two Double Bedrooms
- Private Garden Square

- Share of Freehold
- Two Bathrooms

- Raised Ground Floor
- West-Facing Reception



Ground Floor

Total area (approx.): 88.6 sq. m (953.3 sq. ft)

Marsh & Parsons Earls Court

246 Old Brompton Road,
Earls Court, London, SW5
020 7590 0800