



Nevern Square, SW5

£750,000



- Two Double Bedrooms
- Private Garden Square

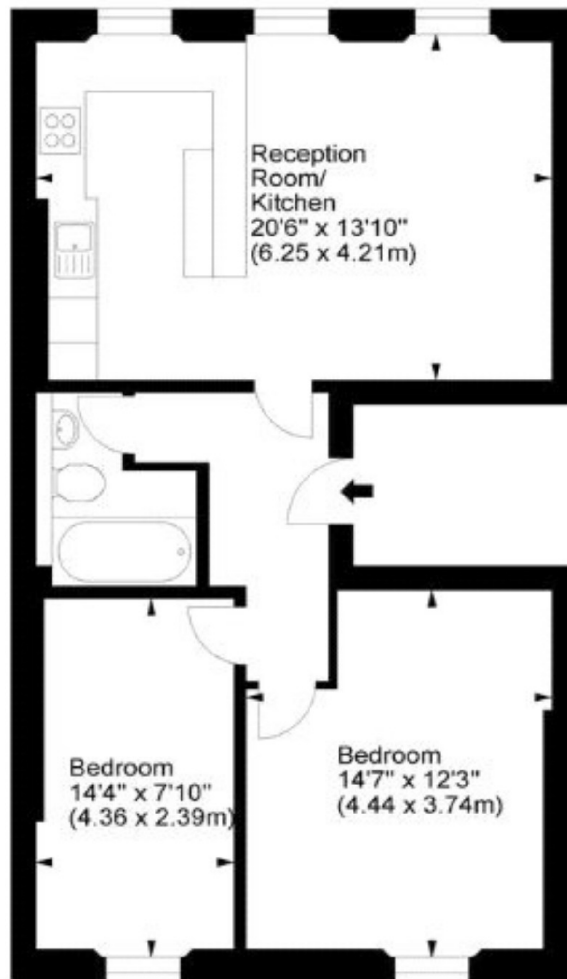
- Share of Freehold
- Earl's Court Station

- 680 Square Feet
- Victorian Conversion

Nevern Square, SW5



Approx. Gross Internal Area
680 Sq Ft - 63.17 Sq M



Third Floor

Marsh & Parsons Earls Court

246 Old Brompton Road,
Earls Court, London, SW5
020 7590 0800