



Finborough Road, SW10

£625,000



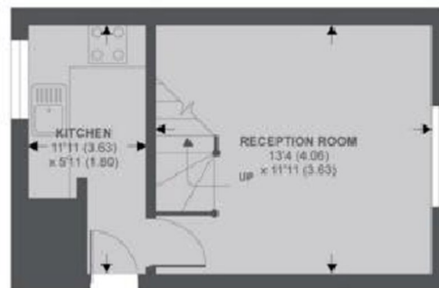
- Two Bedrooms
- One Bathroom

- Separate Kitchen
- Split-Level

- Large Garden
- Recently Refurbished



Ground Floor



Lower Ground Floor

APPROX FLOOR AREA 523 SQ.FT 48.6 SQ.M

Copyright nichecom.co.uk 2019 REF : 485334

Marsh & Parsons South Kensington

29 Harrington Road, London,
SW7 3HD
020 7590 0800

We aim to make our particulars both accurate and reliable. However, they are not guaranteed; nor do they form part of an offer or contract. If you require clarification on any points then please contact us, especially if you're traveling some distance to view. Please note that appliances and heating systems have not been tested and therefore no warranties can be given as to their good working order.