



## Fitzclare House, W11

£1,000,000



- Excellent Condition
- Two Bathroom
- South-facing Balcony
- Two Bedroom
- Private Off-street Parking
- Lift Access

## Fitzclarence House, W11

APPROX. GROSS INTERNAL FLOOR AREA 1032 SQFT / 95.87 SQM

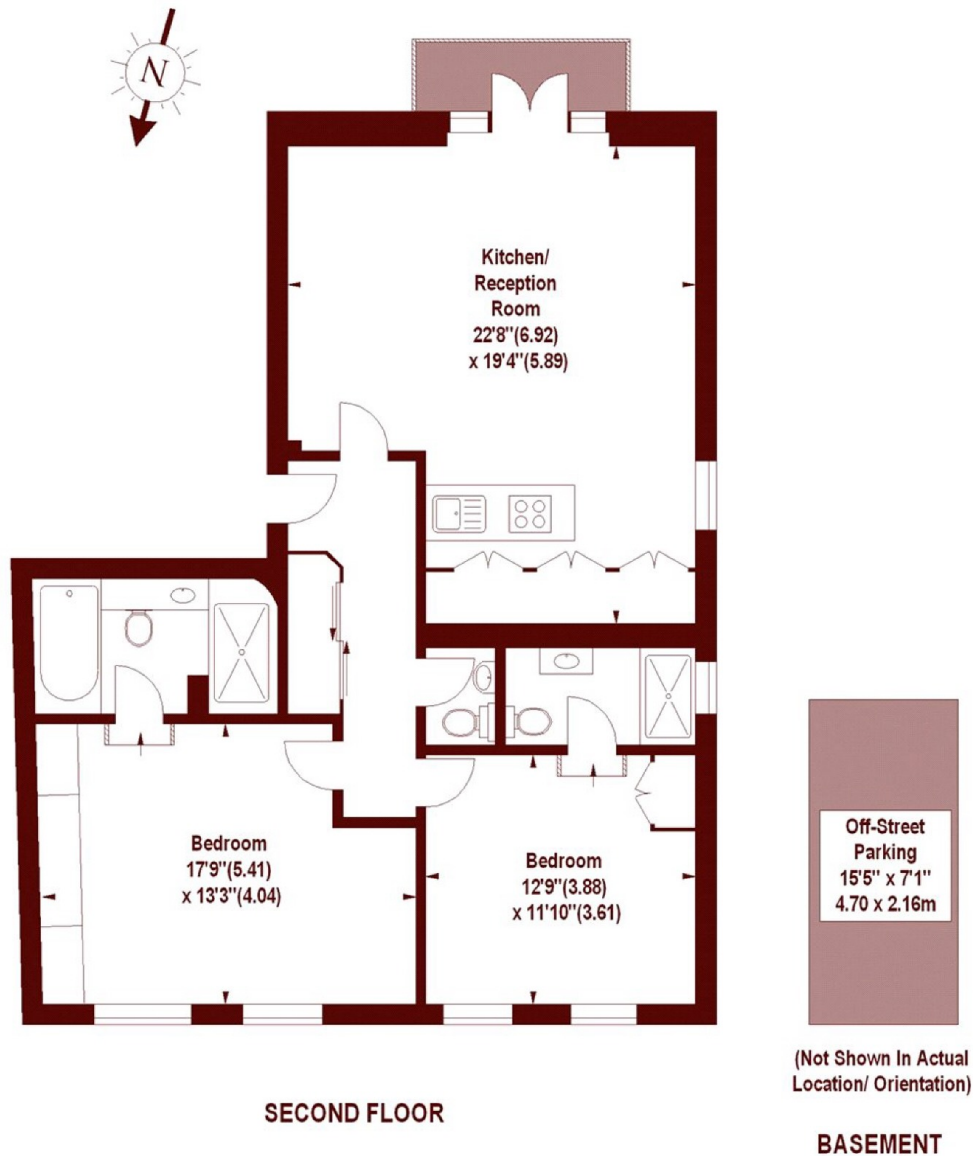


Illustration For Identification Purposes Only. Not To Scale  
\*Floorplan Drawn According To RICS Guidelines  
Copyright of FeaturePRO

### Marsh & Parsons Holland Park

57 Norland Square, London,  
W11 4QJ  
020 7605 6890

We aim to make our particulars both accurate and reliable. However, they are not guaranteed; nor do they form part of an offer or contract. If you require clarification on any points then please contact us, especially if you're traveling some distance to view. Please note that appliances and heating systems have not been tested and therefore no warranties can be given as to their good working order.