



Elsham Road, W14

£634 per week



- Two Bedroom
- Two Bathroom

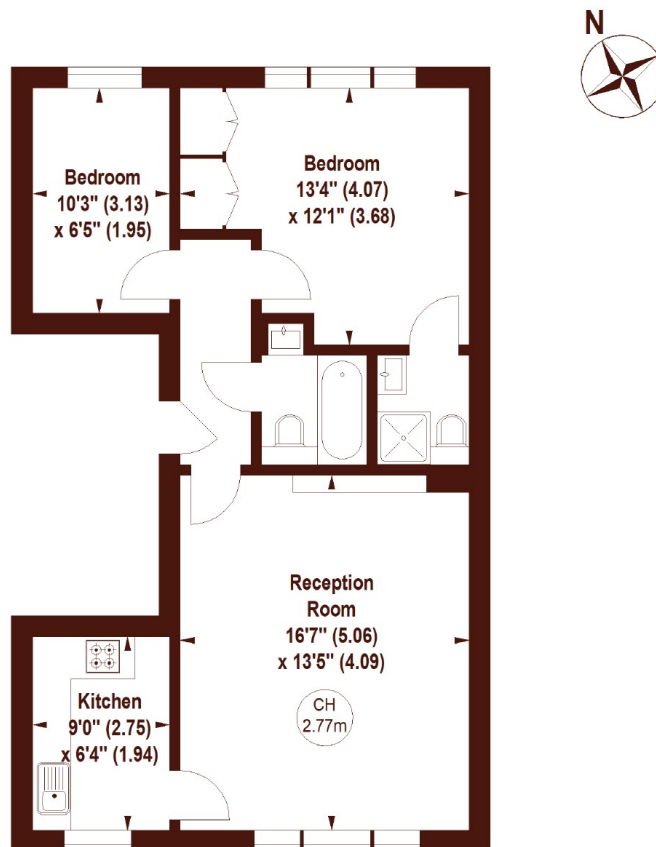
- Wood Floors Throughout
- Separate Kitchen

- Built In Storage
- Natural Light

Elsham Road, W14

APPROX. GROSS INTERNAL FLOOR AREA 600 SQFT / 55.74 SQM

Key :
CH - Ceiling Height



SECOND FLOOR

Not to scale, for guidance only and must not be relied upon as a statement of fact.
All measurements and areas are approximate only

Marsh & Parsons Holland Park

57 Norland Square, London,
W11 4QJ
020 7605 6890