



Holland Park, W11

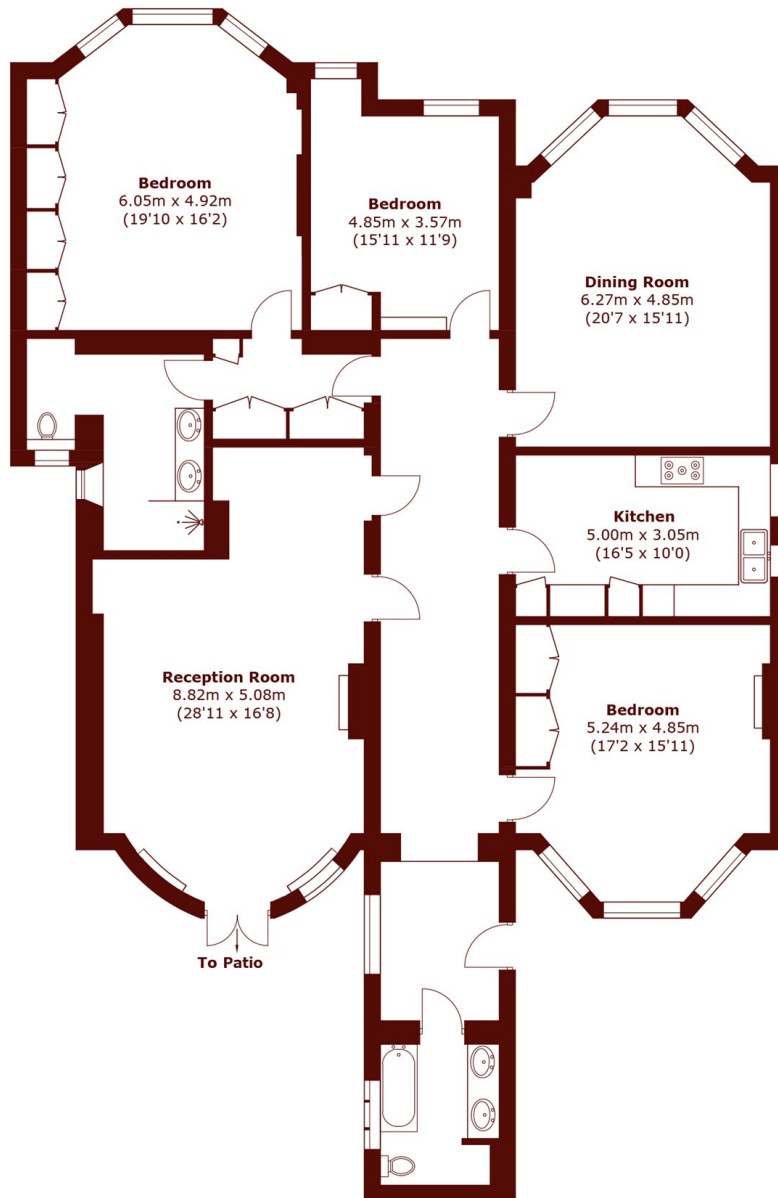
£2,500,000



- Four Bedroom
- Wooden Flooring

- Private Patio
- Communal Garden

- Two Bathroom
- Period Property



Lower Ground Floor

Total area (approx.): 207.4 sq. m (2,232.4 sq. ft)

Marsh & Parsons Holland Park

57 Norland Square, London,
W11 4QJ
020 7605 6890