

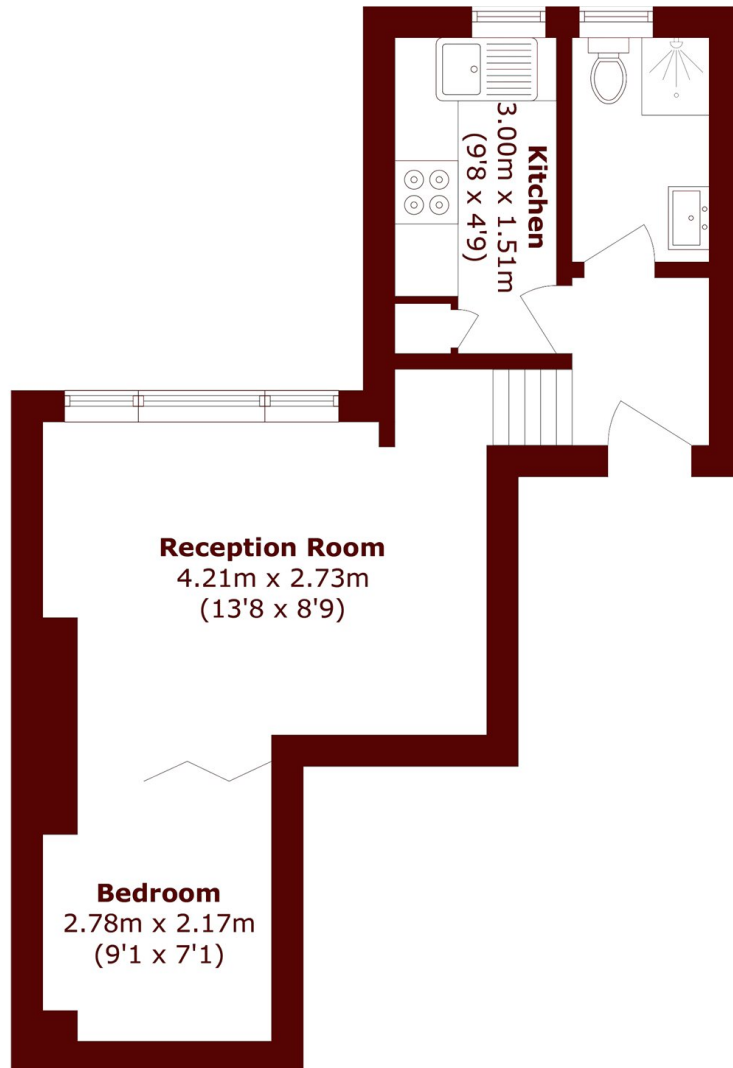


## Holland Road, W14

£395,000

0 1 1 C

- Spacious Studio
- High Ceilings
- Central Location
- Natural Light
- First Floor
- Green Outlook



Total area (approx.): 30.2 sq. m (325.1 sq. ft)

## Marsh & Parsons Holland Park

57 Norland Square, London,  
W11 4QJ  
020 7605 6890