



## St. Anns Villas, W11

£922 per week



- Refurbished
- Two Double Bedrooms

- Two Bathrooms
- Wooden Flooring

- Private Patio
- Private Entrance





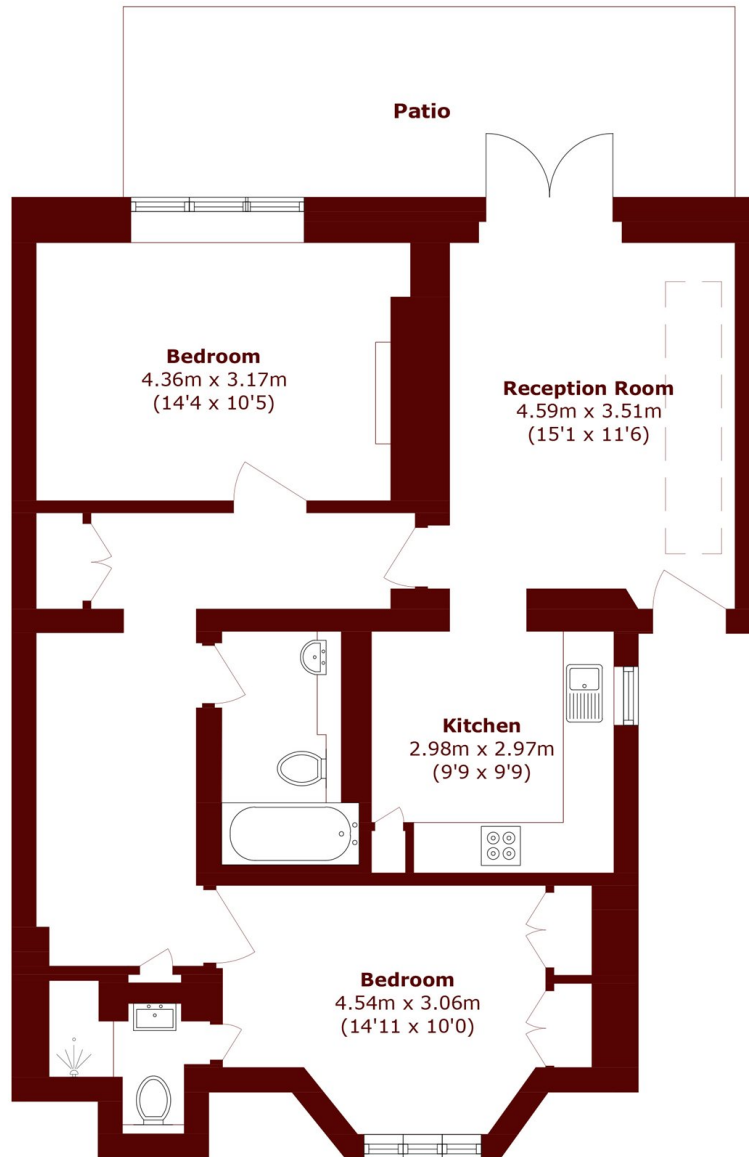


## ABOUT THE PROPERTY

This bright and spacious two-bedroom, two-bathroom flat offers around 1,000 sq. Ft. Of well-designed living space in a sought-after West London location, moments from Holland Park. Recently refurbished, it features a modern kitchen, generous bedrooms with built-in storage, stylish bathrooms, and a private patio ideal for relaxing or entertaining.

St Ann's Villas, W11, is a quiet residential street close to Royal Crescent and Holland Park. The area offers a village feel with excellent access to Notting Hill, Kensington, and Westfield. Nearby Holland Park and Shepherd's Bush stations provide easy transport across London, with green spaces just moments away.





## Lower Ground Floor

Total area (approx.): 80.7 sq. m (868.6 sq. ft)  
Patio (approx.): 17.5 sq. m (188.3 sq. ft)

### Marsh & Parsons Holland Park

57 Norland Square, London,  
W11 4QJ  
020 7605 6890