



Holland Park Avenue, W11

£2,350,000



- Two Bedroom
- High Ceilings

- Balcony
- Large Reception

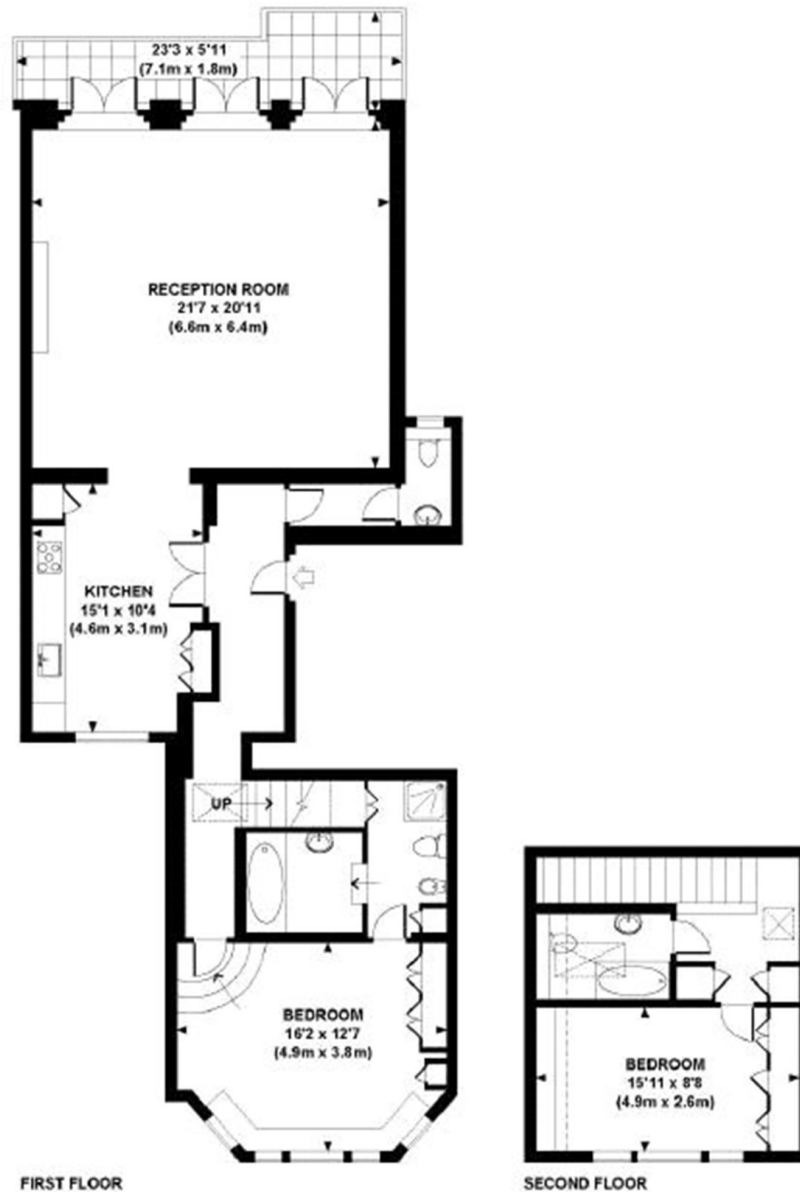
- First Floor
- Two Bathroom

HOLLAND PARK AVENUE, W11

Approx. gross internal area

1353 Sq.Ft. / 125.7 Sq.M.

1390 Sq.Ft. / 129.1 Sq.M. Inc. Restricted Height Area



All measurements are approximate and for indication purposes only as defined by the RICS Code of Measuring Practice © 2014. Drawing: Jeroen Design (www.jeroendesign.com) K28 75 to 9133

Marsh & Parsons Holland Park

57 Norland Square, London,
W11 4QJ
020 7605 6890

We aim to make our particulars both accurate and reliable. However, they are not guaranteed; nor do they form part of an offer or contract. If you require clarification on any points then please contact us, especially if you're traveling some distance to view. Please note that appliances and heating systems have not been tested and therefore no warranties can be given as to their good working order.