



## Ladbroke Grove House, W11

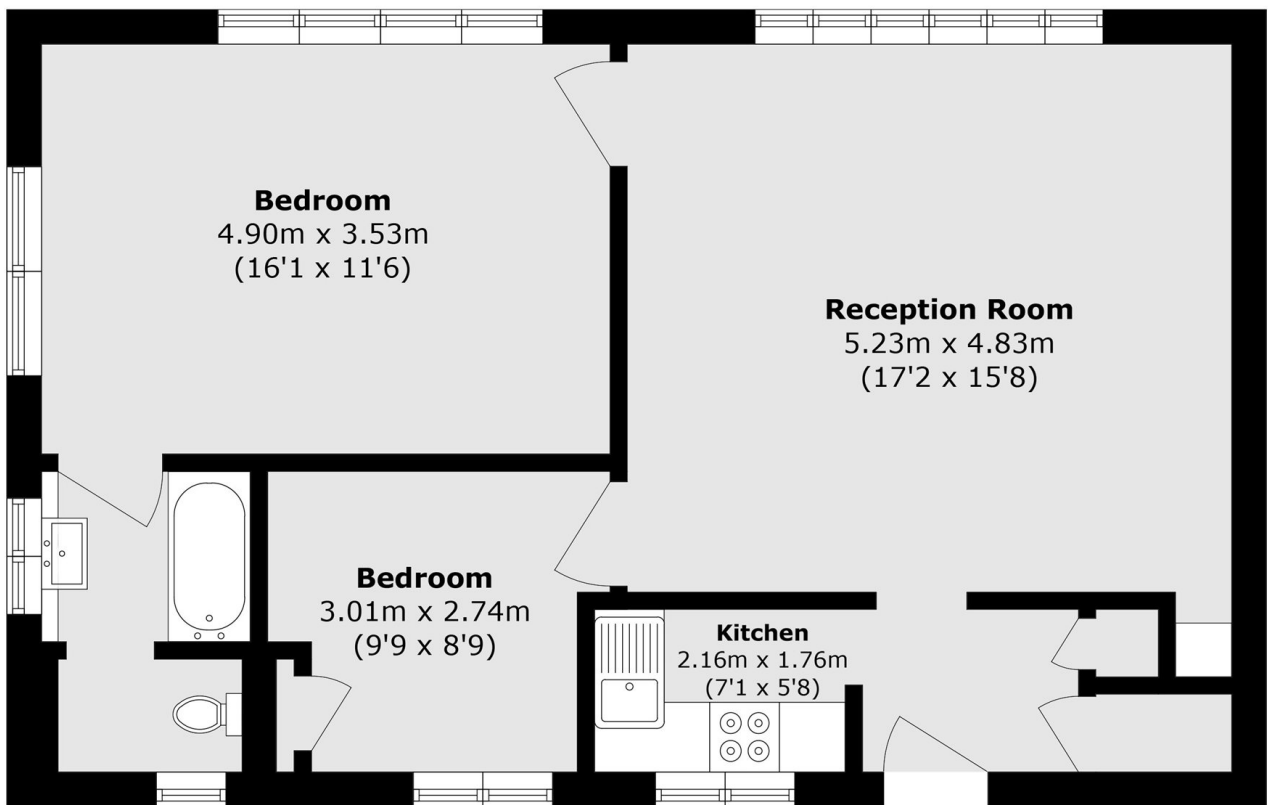
£850,000



- Two Bedrooms
- Communal Garden

- Lift Access
- Natural Light

- Second Floor
- Prime Location



Total area (approx.): 64.3 sq. m (692.1 sq. ft)

**Marsh & Parsons Holland Park**

57 Norland Square, London,  
W11 4QJ  
020 7605 6890