

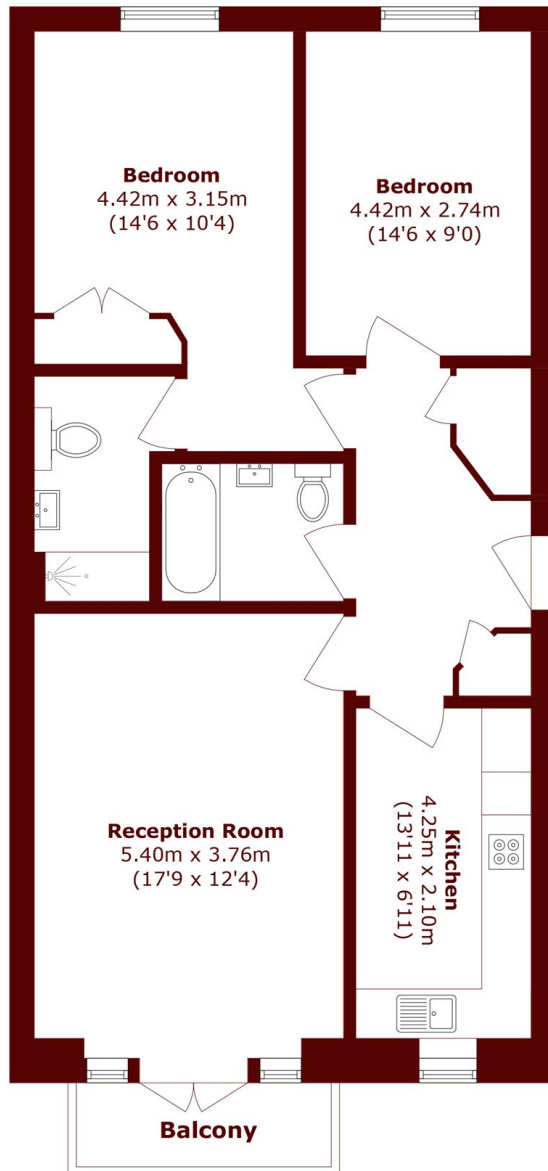


Fitzclarence House, W11

£1,250,000



- Two Bedroom
- Balcony
- Lift access
- Light and bright
- Secure building
- Excellent location



Fourth Floor

Total area (approx.): 77.7 sq. m (836.3 sq. ft)

Balcony area (approx.): 3.1 sq. m (33.3 sq. ft)

Marsh & Parsons Holland Park

57 Norland Square, London,
W11 4QJ
020 7605 6890