

Addisland Court, W14

£2,500,000



- Superb Lateral Apartment
Three Double Bedrooms
- Fifth Floor with Lifts
Westerly Views
- Communal Gardens
Porter & Garage Parking





ABOUT THE PROPERTY

A superb two bedroom, west facing apartment on the fifth floor of an Art Deco mansion block with two lifts, porter and lock-up garage on the lower ground floor of the building.

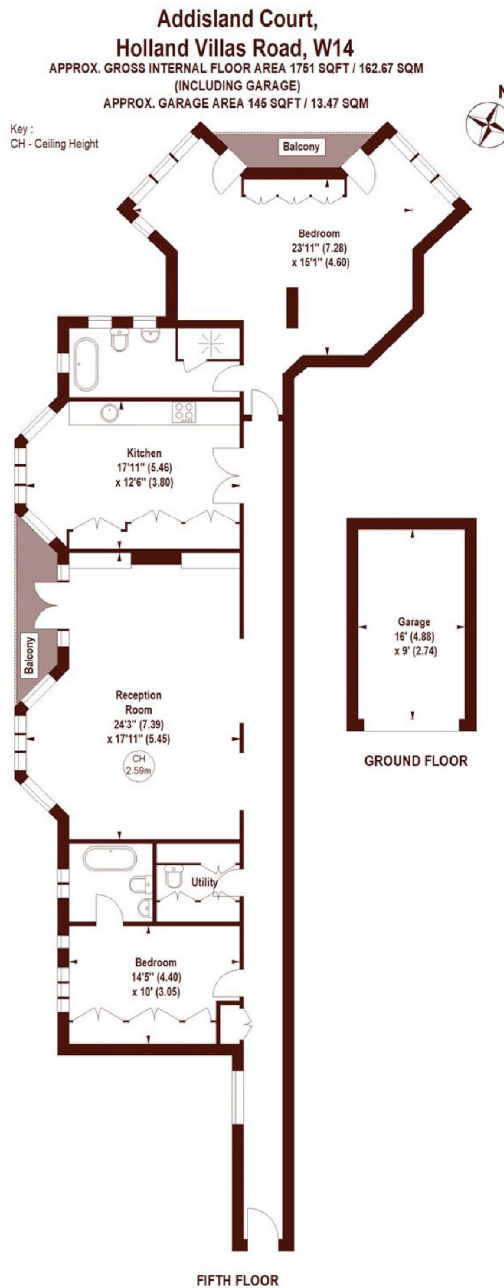
The apartment was fully refurbished about 10 years ago and is in excellent condition. With expansive green views to the west - which are best appreciated from the balcony leading out from the generous reception room. The two well-proportioned bedrooms, both with en-suite bathrooms are at opposite ends of the apartment. There is a well-equipped eat-in kitchen and a separate utility room.



The apartment comes with the benefit of a garage on the lower ground floor and the current owner leases a secure storage room - an arrangement which could be taken up by the purchaser by separate arrangement with the building.

Addisland Court is located on the northern end of Holland Villas Road and is close to all the amenities and transport facilities of Holland Park Avenue, Notting Hill and Shepherds Bush, plus being within easy walking distance of Holland Park and Westfield shopping centre.





Not to scale, for guidance only and must not be relied upon as a statement of fact.
All measurements and areas are approximate only

Marsh & Parsons Holland Park

57 Norland Square, London,
W11 4QJ
020 7605 6890

We aim to make our particulars both accurate and reliable. However, they are not guaranteed; nor do they form part of an offer or contract. If you require clarification on any points then please contact us, especially if you are traveling some distance to view. Please note that appliances and heating systems have not been tested and therefore no warranties can be given as to their good working order.