



Russell Gardens Mews, W14

£575 per week



- Cobbled Mews
- Two Double Bedrooms

- Wooden Flooring
- Private Terrace

- Fitted Storage
- Gas & Electricity Included



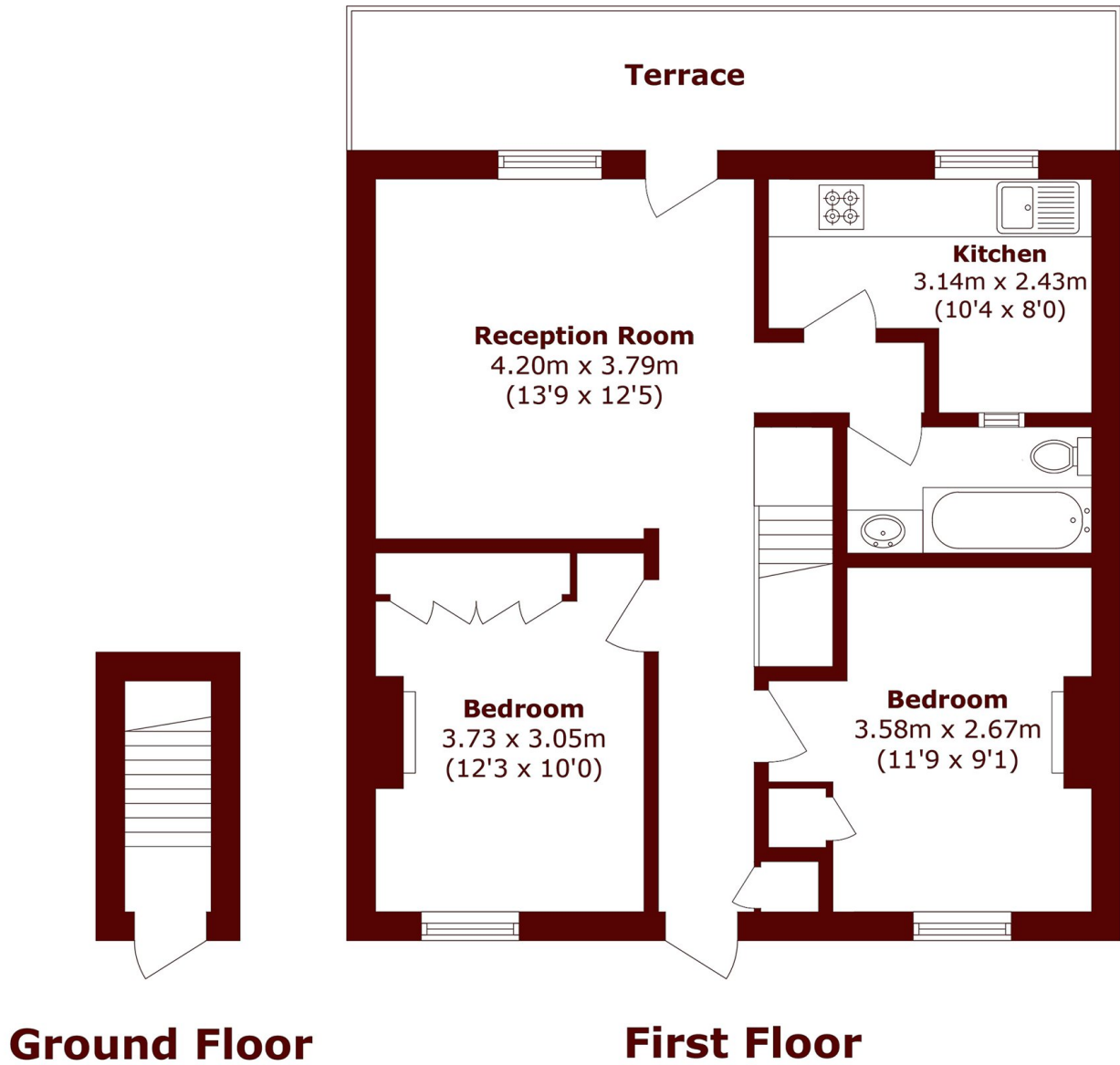


ABOUT THE PROPERTY

A charming first floor flat set within a picturesque cobbled mews, offering two double bedrooms with fitted storage and wooden flooring throughout. The property features a generous reception room, separate kitchen with space for a breakfast table, a well fitted bathroom and a south westerly facing terrace. Gas and electricity are included in the rent.

Located in the prestigious Royal Borough of Kensington & Chelsea, it is ideally positioned near Holland Park's Central Line station, as well as the shops, restaurants, and amenities of Holland Park, Kensington High Street, and Westfield Shopping Centre. This exceptional home combines luxury living with convenience in one of London's most sought-after areas.





Total area (approx.): 58.9 sq. m (634.0 sq. ft)
Terrace area (approx.): 11.2 sq. m (120.6 sq. ft)

Marsh & Parsons Holland Park

57 Norland Square, London,
W11 4QJ
020 7605 6890