



Holland Grove, SW9

£600,000



- Two Bedrooms
- Two Bathrooms
- Two Terraces
- Secure Building
- Split-Level Apartment
- Private Entrance





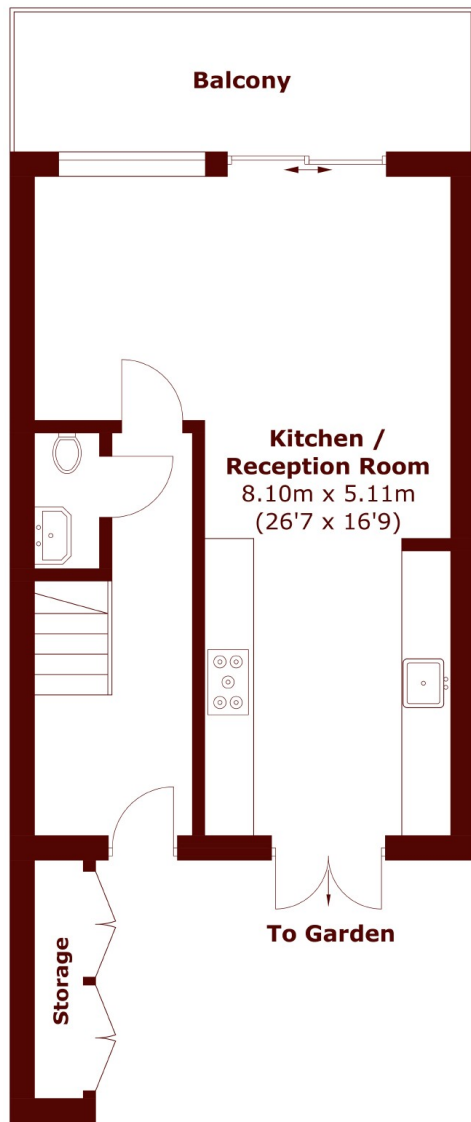
ABOUT THE PROPERTY

GUIDE PRICE: £625,000-£650,000

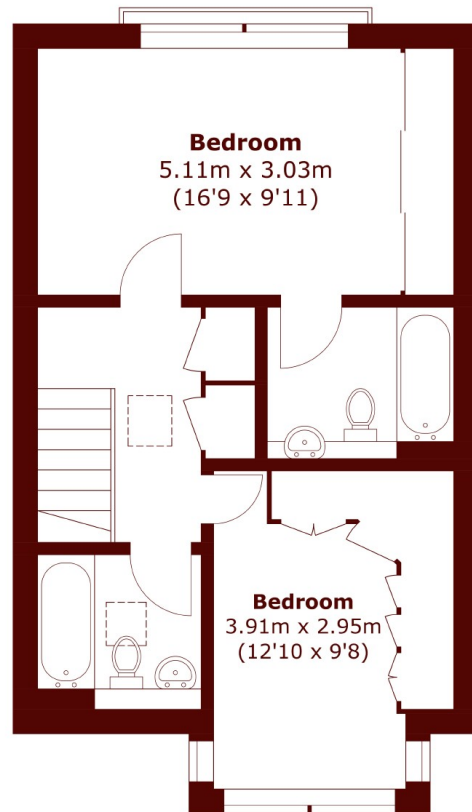
This fantastic split-level property boasts a private entrance and high ceilings throughout, offering a spacious living room, and two private terraces. Situated on Holland Grove, transport links are fantastic.

Oval underground station (Northern line) is a short walk away, providing easy access to Central London, The City, and beyond. The green open spaces of both Kennington Park and Myatt's Field Park are also within easy reach.





First Floor



Second Floor

Total area (approx.): 85.8 sq. m (923.5 sq. ft)
External Storage: 1.7 sq. m (18.2 sq. ft)
Balcony: 9.6 sq. m (103.3 sq. ft)

Marsh & Parsons Kennington

295 Kennington Road,
London, SE11 4QE
020 7587 1533