



Burton Road, SW9

£950,000

 3  1  1  D

- South Facing Garden
- Share of Freehold
- Three Double Bedrooms
- High Ceilings
- Balcony
- Duplex Garden





ABOUT THE PROPERTY

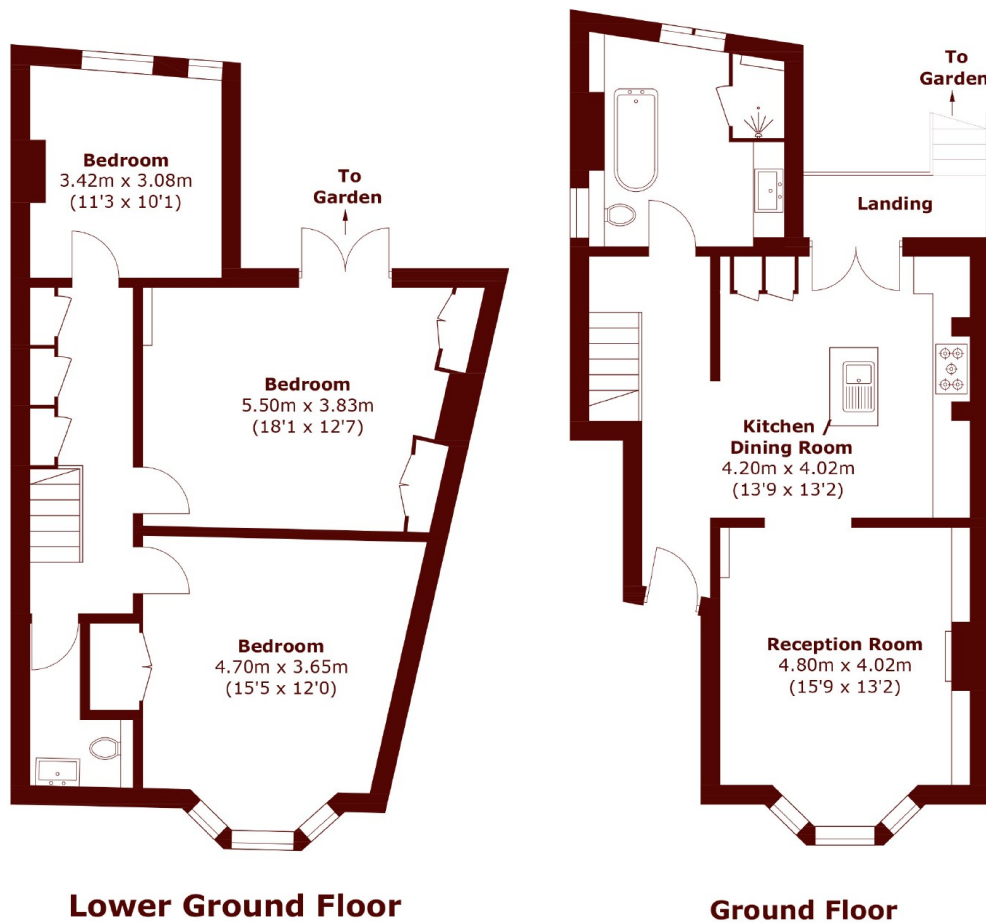
A beautifully appointed, end-of-terrace duplex apartment that offers approximately 1,300 sq. Ft of living space spread across two floors. This Victorian property seamlessly blends its original charm and character with modern finishes throughout.

The apartment features a spacious living room, enhanced by high ceilings, a large bay window, and a lovely wood burner fireplace. The separate kitchen/ diner is well-equipped with integrated appliances and attractive wall and base units. Double doors from this space open onto a private balcony that overlooks a stunning, south facing garden.

The property also includes three double bedrooms, a family bath and steam shower room, with underfloor heating and a guest cloakroom. Benefiting from an abundance of natural light and generous room sizes throughout, the apartment is offered with a share of the freehold and separate bicycle storage.

Located just moments away from the beautiful Myatt's Field Park, this property is perfect for those who enjoy being surrounded by greenery and nature. Burton Road is close to Brixton, Stockwell, and Oval underground stations.





Total area (approx.): 118.5 sq. m (1,275.4 sq. ft)

Marsh & Parsons Marsh & Parsons

295 Kennington Road,
London, SE11 4QE
020 7587 1533

We aim to make our particulars both accurate and reliable. However, they are not guaranteed; nor do they form part of an offer or contract. If you require clarification on any points then please contact us, especially if you're traveling some distance to view. Please note that appliances and heating systems have not been tested and therefore no warranties can be given as to their good working order.