



Lorrimore Square, SE17

£500,000



- Five Bedrooms
- Duplex Apartment

- Chain Free
- Prime Location

- Garden Square
- Lots of Light





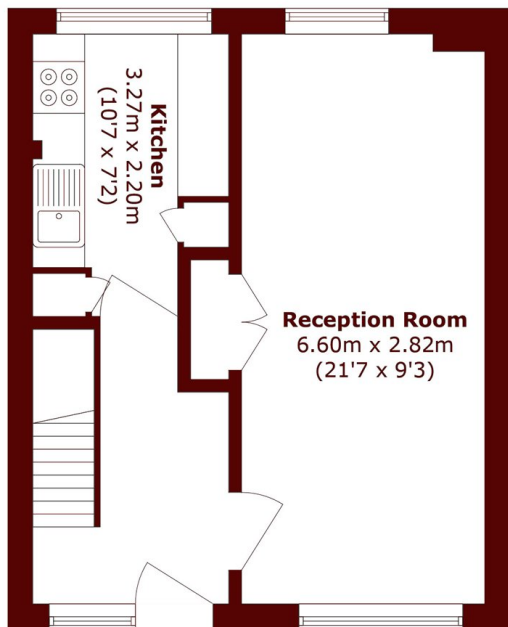
ABOUT THE PROPERTY

This impressive five bedroom duplex apartment is set within a modern, well-maintained block and offers generous living space throughout. The property features a large dual aspect reception room, providing an abundance of natural light, along with a separate, well proportioned kitchen. Overlooking the delightful Park Square, the apartment enjoys a bright and airy feel and benefits from being chain free, making it an ideal opportunity for both owner occupiers and investors.

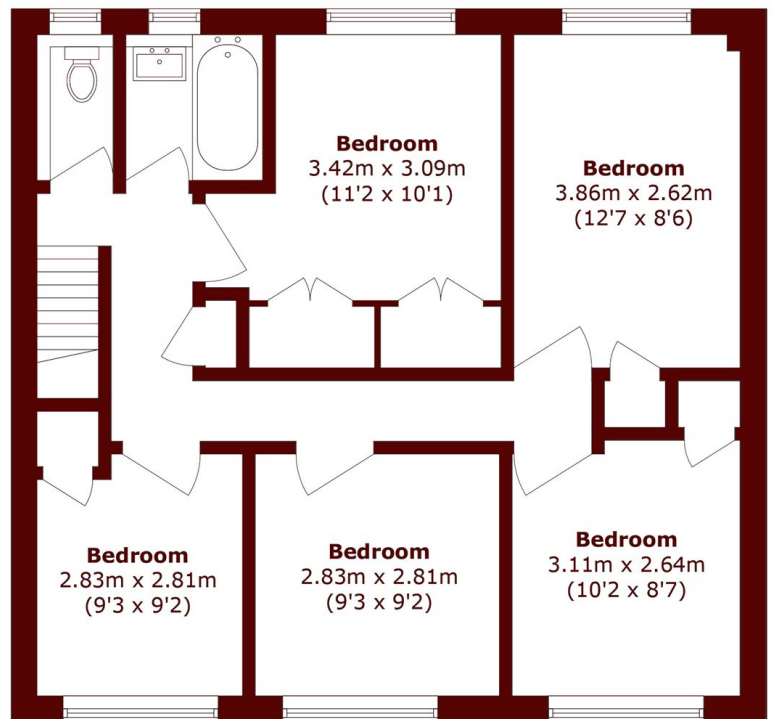


Ideally located just a short walk from the green open spaces of Kennington Park, the property is also conveniently positioned close to Kennington and Elephant & Castle stations. A wide selection of shops, cafés, and local amenities are all within easy reach, offering excellent transport links and a vibrant neighbourhood lifestyle.





First Floor



Second Floor

Total area (approx.): 97.0 sq. m (1044.1 sq. ft)

Marsh & Parsons Kennington

295 Kennington Road,
London, SE11 4QE
020 7587 1533