



White Hart Street, SE11

£700,000



- Beautiful Conversion
- Immaculate Finish
- Gated Mews
- Private Garden
- Chain Free
- Excellent Location





ABOUT THE PROPERTY

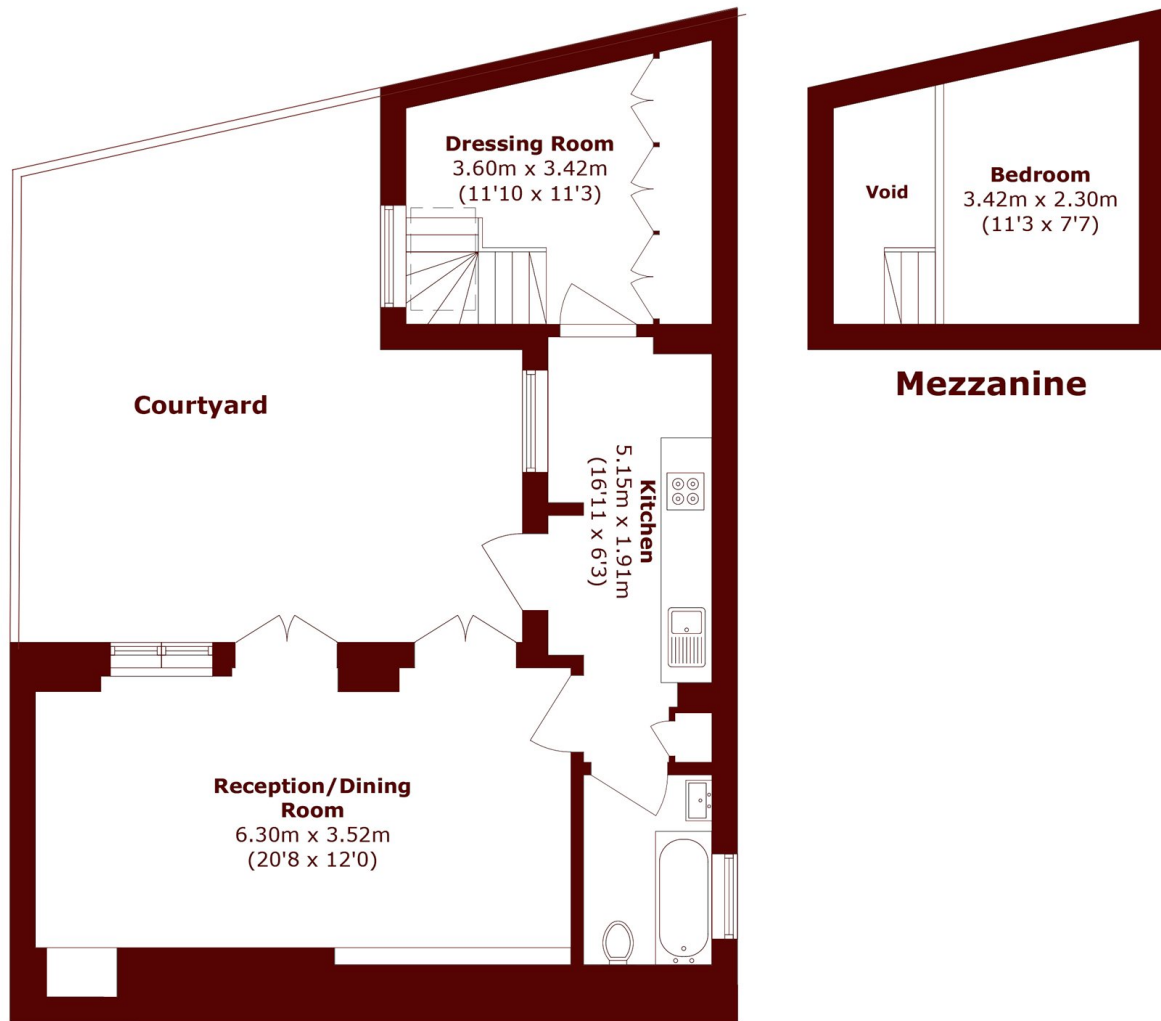
A peaceful, green oasis in the heart of the city.

This stunning one-bedroom property is set within a private gated mews, discreetly tucked away off Kennington Lane. Forming part of a sensitively converted former forge dating back to circa 1860, this hidden gem boasts a beautifully landscaped courtyard garden as well as an abundance of natural light. The property's carefully considered layout creates a harmonious flow of well-proportioned rooms, endowed with plenty of cleverly incorporated storage, offering an overall sense of spaciousness and tranquillity. French doors leading out into the garden make it an extension of the living room in warmer months, and a fabulous indoor-outdoor space for entertaining in a truly unique setting.

Secure off-street parking is included, and the property is offered to the market chain-free.

The location is ideal, minutes away from Kennington Park, Kennington Station and all the local amenities in the Kennington Cross area. Additional transport links just around the corner include Elephant & Castle, Oval and Waterloo stations, alongside numerous bus routes providing easy access to the West End, the City and beyond.





Ground Floor

Total area (approx.): 56.0 sq. m (602.7 sq. ft)

(Excluding Void)

Courtyard area (approx.): 31.0 sq. m (333.6 sq. ft)

Marsh & Parsons Kennington

295 Kennington Road,
London, SE11 4QE
020 7587 1533

We aim to make our particulars both accurate and reliable. However, they are not guaranteed; nor do they form part of an offer or contract. If you require clarification on any points then please contact us, especially if you're traveling some distance to view. Please note that appliances and heating systems have not been tested and therefore no warranties can be given as to their good working order.