



Albert Embankment, SE1

£1,375,000

 3  2  1  D

- Stunning River Views
- Three Bedrooms
- Secure Underground Parking
- Riverside Development
- 24 Hour Concierge
- Residents Gym





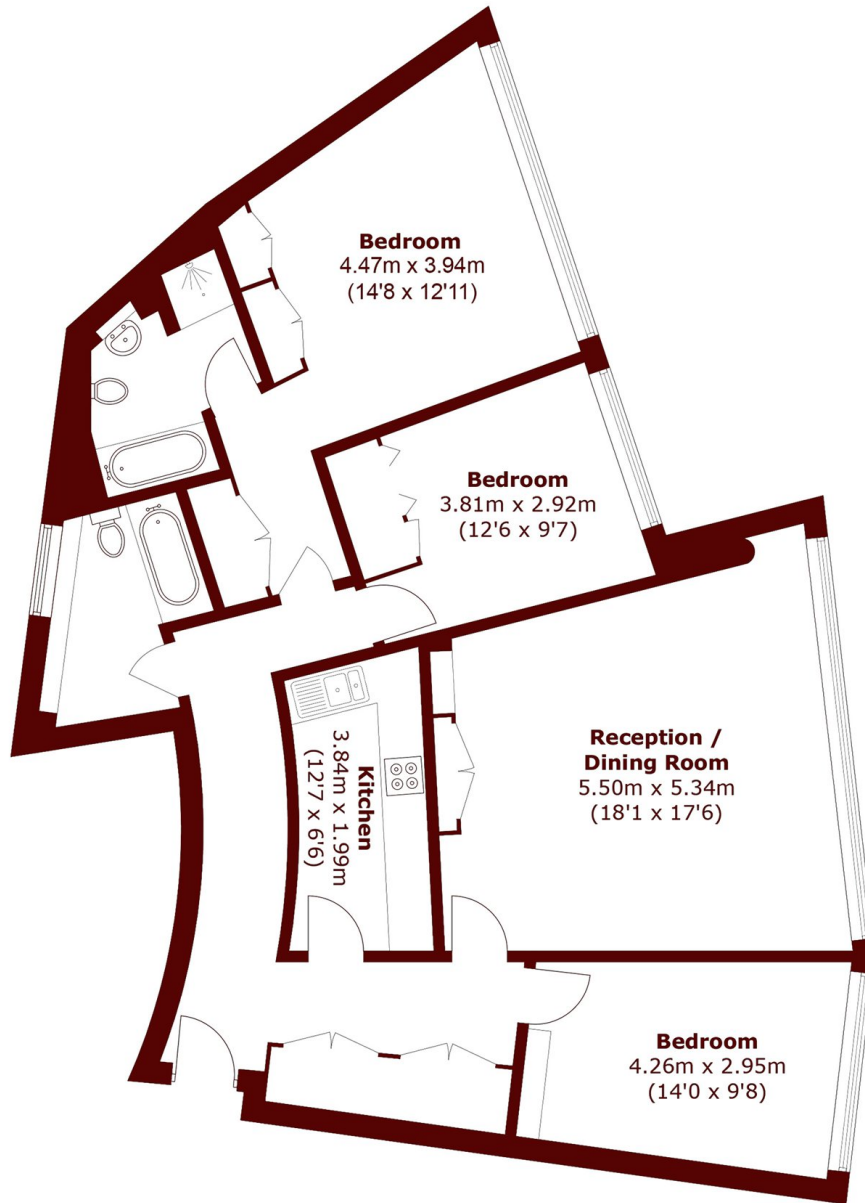
ABOUT THE PROPERTY

Boasting arguably some of the finest views in London, this exceptional three bedroom apartment is situated on the fifth floor of the sought-after Parliament View Apartments. The property enjoys expansive, uninterrupted views across the River Thames towards the Houses of Parliament and Big Ben. Offering approximately 1,200 sq ft of well-proportioned lateral accommodation, the apartment comprises a separate kitchen and living room, three generously sized double bedrooms, and two bathrooms. Floor to ceiling windows flood the apartment with natural light while perfectly framing the spectacular outlook. Residents of Parliament View Apartments benefit from a 24-hour concierge service and an on-site gym, while the property also includes secure underground parking.

The property benefits from secure underground parking, 24-hour concierge, a residents gymnasium and is offered on a chain free basis.

Parliament View is located close to Lambeth Bridge, on the banks of the River Thames. There are also excellent transport links with Westminster, Vauxhall and Lambeth North all located close by giving easy access to the rest of Central London.





Total area (approx.): 108.4 sq. m (1,166.8 sq. ft)

Marsh & Parsons Kennington

295 Kennington Road,
London, SE11 4QE
020 7587 1533

We aim to make our particulars both accurate and reliable. However, they are not guaranteed; nor do they form part of an offer or contract. If you require clarification on any points then please contact us, especially if you're traveling some distance to view. Please note that appliances and heating systems have not been tested and therefore no warranties can be given as to their good working order.