



## Holland Street, W8

£1,495,000



- Three Double Bedrooms
- Second Floor With Lift
- South-West Facing Reception
- Leafy Views
- Basement Storage
- Central Kensington









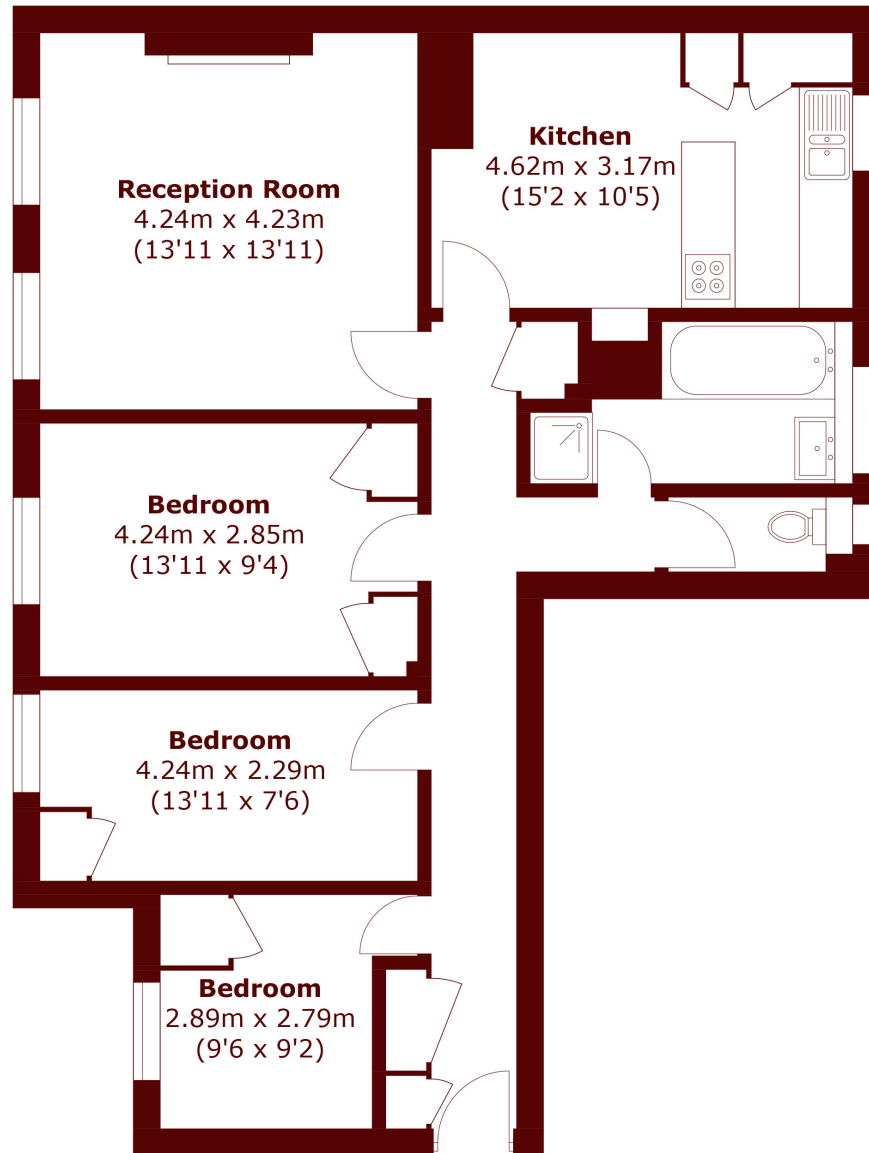
## ABOUT THE PROPERTY

A great opportunity to acquire this three-bedroom flat, situated on the second floor of this attractive mansion block set in a charming and quiet location.

A great opportunity to acquire this spacious three-bedroom flat, situated on the second floor of this attractive mansion block with a new lift and an Art Deco communal hall. Set in a charming and quiet location the apartment boasts three bright double bedrooms, one South-West facing reception room, and one stylish bathroom with separate cloak room. The property also features a fully equipped kitchen with dining area. Residents benefit from private parking available to rent and access to a communal garden.

Located off Holland Street on Kensington Church Walk, Ingelow House is ideally located between High Street Kensington and Notting Hill Gate. The apartment is close to excellent dining, shopping and transport facilities, with High Street Kensington tube less than a 5 minute walk.





## Third Floor

Total area (approx.): 84.9 sq. m (914.0 sq. ft)

### Marsh & Parsons Kensington

9 Kensington Church Street,  
London, W8 4LF  
020 7368 4450