

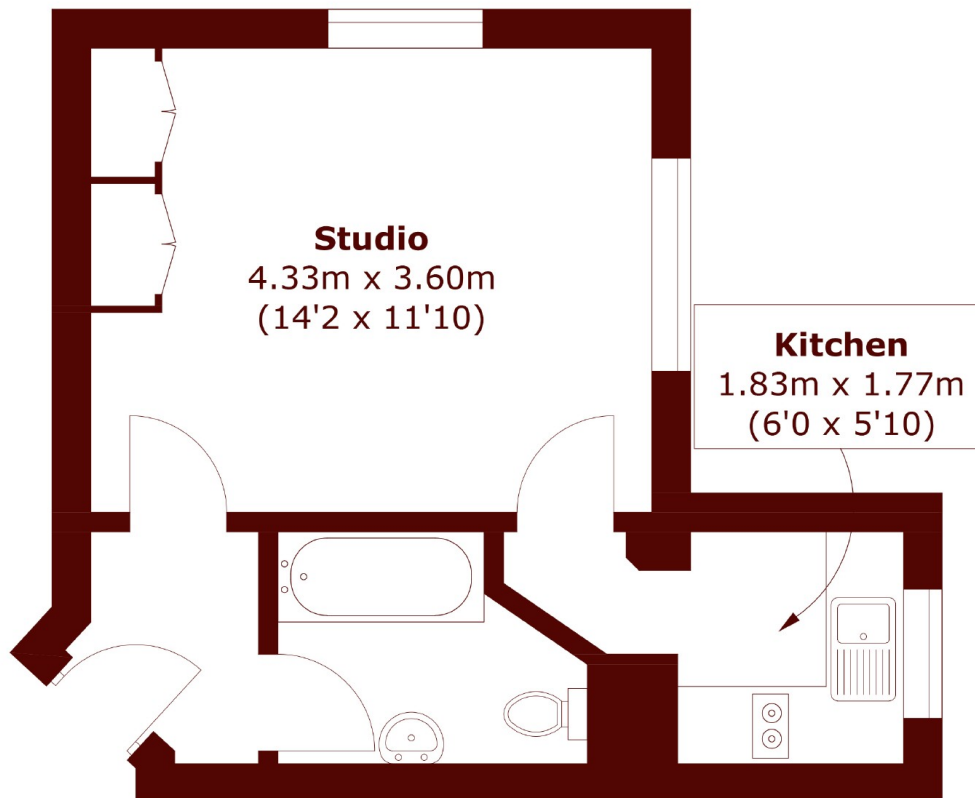


Broadwalk Court, W8

£350,000



- Studio
- Wooden Floors
- 24 hour porter
- Lift
- Moments to Notting Hill Gate
- Share Of Freehold



Total area (approx.): 27.6 sq. m (297.1 sq. ft)

Marsh & Parsons Kensington

9 Kensington Church Street,
London, W8 4LF
020 7368 4450