



## Vicarage Gate, W8

£1,050,000



- Two bedrooms
- Two bathrooms

- Upper floor with Lift
- Newly Refurbished

- Prime Location
- Share of Freehold







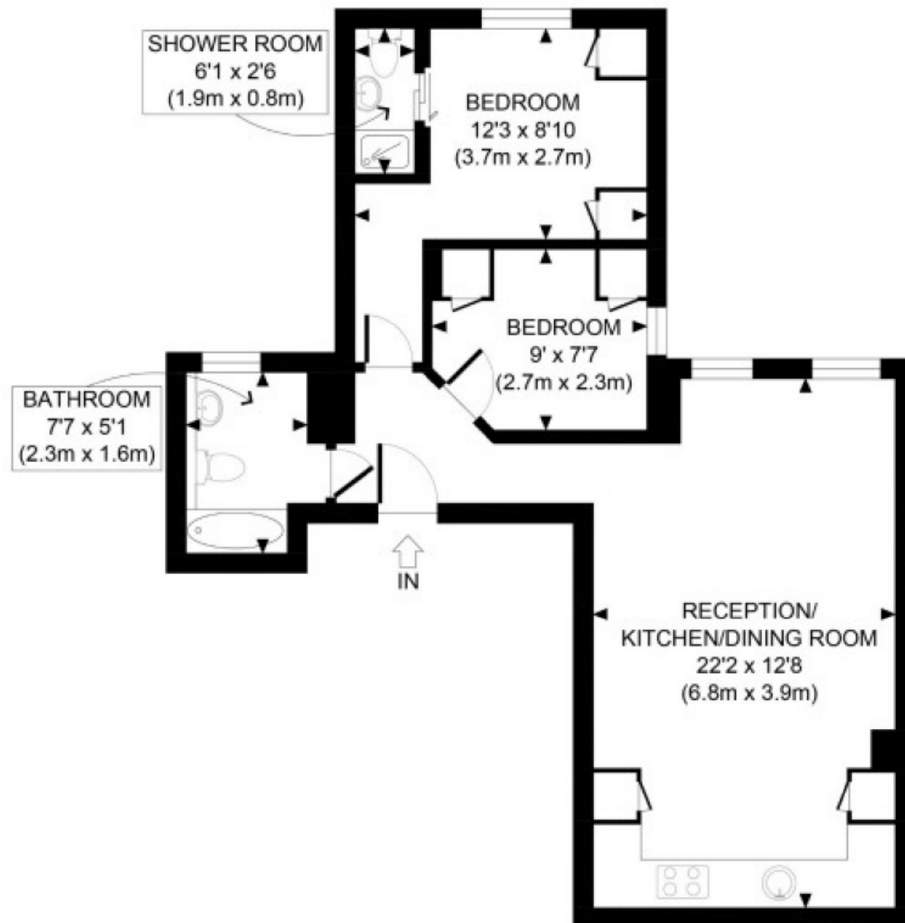
## ABOUT THE PROPERTY

A beautifully refurbished two bedroom apartment in Prime Kensington.

Located on the third floor (with lift) of an imposing end-of-terrace period conversion, this beautifully refurbished two bedroom apartment is situated on a quiet, no-through street next to St Mary's Church, in the very heart of Kensington just moments from Notting Hill Gate and Kensington High Street. Carefully designed and curated by a team of artists, the apartment blends mid-century modern style with a classic contemporary feel, offering a refined and timeless aesthetic throughout. The apartment enjoys a leafy and tranquil outlook, overlooking the grand mansions of Kensington Palace Gardens and the treetops of Hyde Park, enhancing the sense of peace and privacy. It further benefits from a share of freehold plus a long lease, and forms part of a well-maintained building where the brand-new interior communal areas have just been completed. The apartment's position in an end-of-terrace building adds an extra layer of privacy and exclusivity. Internally, the apartment features Miele appliances, high-quality finishes, and a thoughtfully laid-out design ideal for both relaxing and entertaining.

Vicarage Gate is a prime residential road in the heart of Kensington, a short walk to Hyde Park.





Approximate gross internal floor area 630 SQ FT

Third Floor

**Marsh & Parsons Kensington**

9 Kensington Church Street,  
London, W8 4LF  
020 7368 4450