



## Vicarage Gate, W8

£999,950

 2  2  1  D

- Two bedrooms
- Two bathrooms
- Upper floor with Lift
- Newly Refurbished
- Prime Location
- Share of Freehold







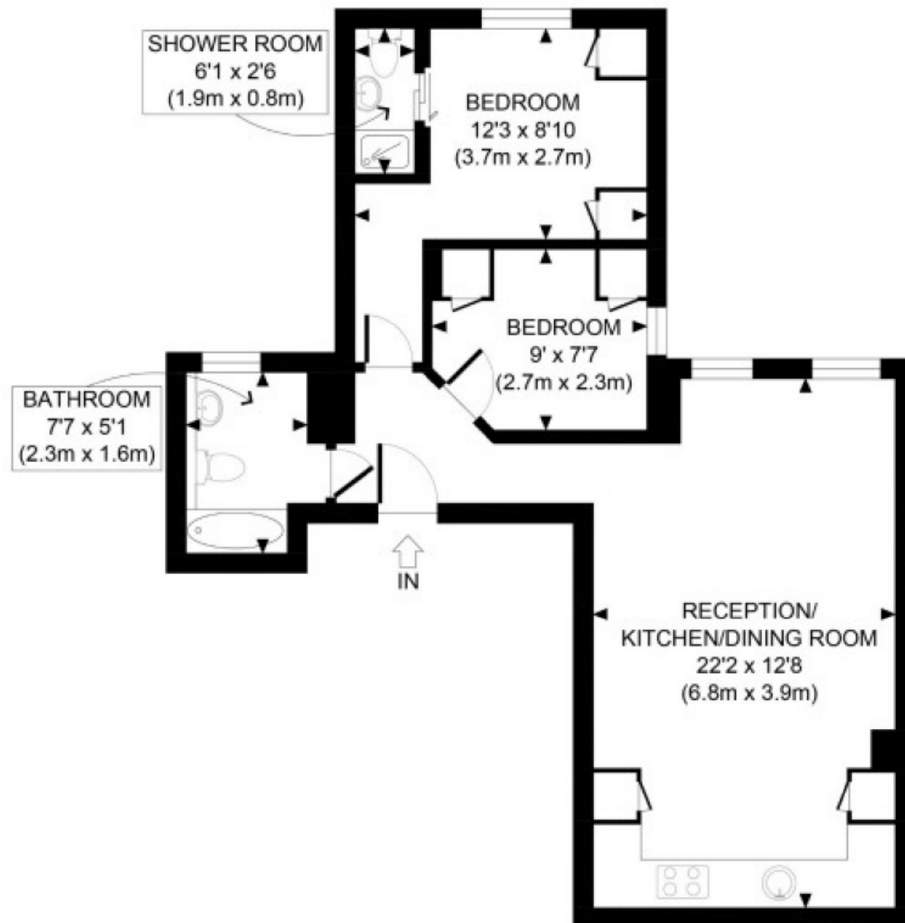
## ABOUT THE PROPERTY

A beautifully refurbished two bedroom apartment in Prime Kensington.

Located on the third floor (with lift) of an imposing end-of-terrace period conversion, this beautifully refurbished two bedroom apartment is situated on a quiet, no-through street next to St Mary's Church, in the very heart of Kensington just moments from Notting Hill Gate and Kensington High Street. Carefully designed and curated by a team of artists, the apartment blends mid-century modern style with a classic contemporary feel, offering a refined and timeless aesthetic throughout. The apartment enjoys a leafy and tranquil outlook, overlooking the grand mansions of Kensington Palace Gardens and the treetops of Hyde Park, enhancing the sense of peace and privacy. It further benefits from a share of freehold plus a long lease, and forms part of a well-maintained building where the brand-new interior communal areas have just been completed. The apartment's position in an end-of-terrace building adds an extra layer of privacy and exclusivity. Internally, the apartment features Miele appliances, high-quality finishes, and a thoughtfully laid-out design ideal for both relaxing and entertaining.

Vicarage Gate is a prime residential road in the heart of Kensington, a short walk to Hyde Park.





Approximate gross internal floor area 630 SQ FT

Third Floor

**Marsh & Parsons Kensington**

9 Kensington Church Street,  
London, W8 4LF  
020 7368 4450

We aim to make our particulars both accurate and reliable. However, they are not guaranteed; nor do they form part of an offer or contract. If you require clarification on any points then please contact us, especially if you're traveling some distance to view. Please note that appliances and heating systems have not been tested and therefore no warranties can be given as to their good working order.