



Iverna Gardens, W8

£1,300,000



- Two Bedrooms
- Two Bathrooms
- Balcony
- Secure Parking
- Moments to High Street
- Leasehold





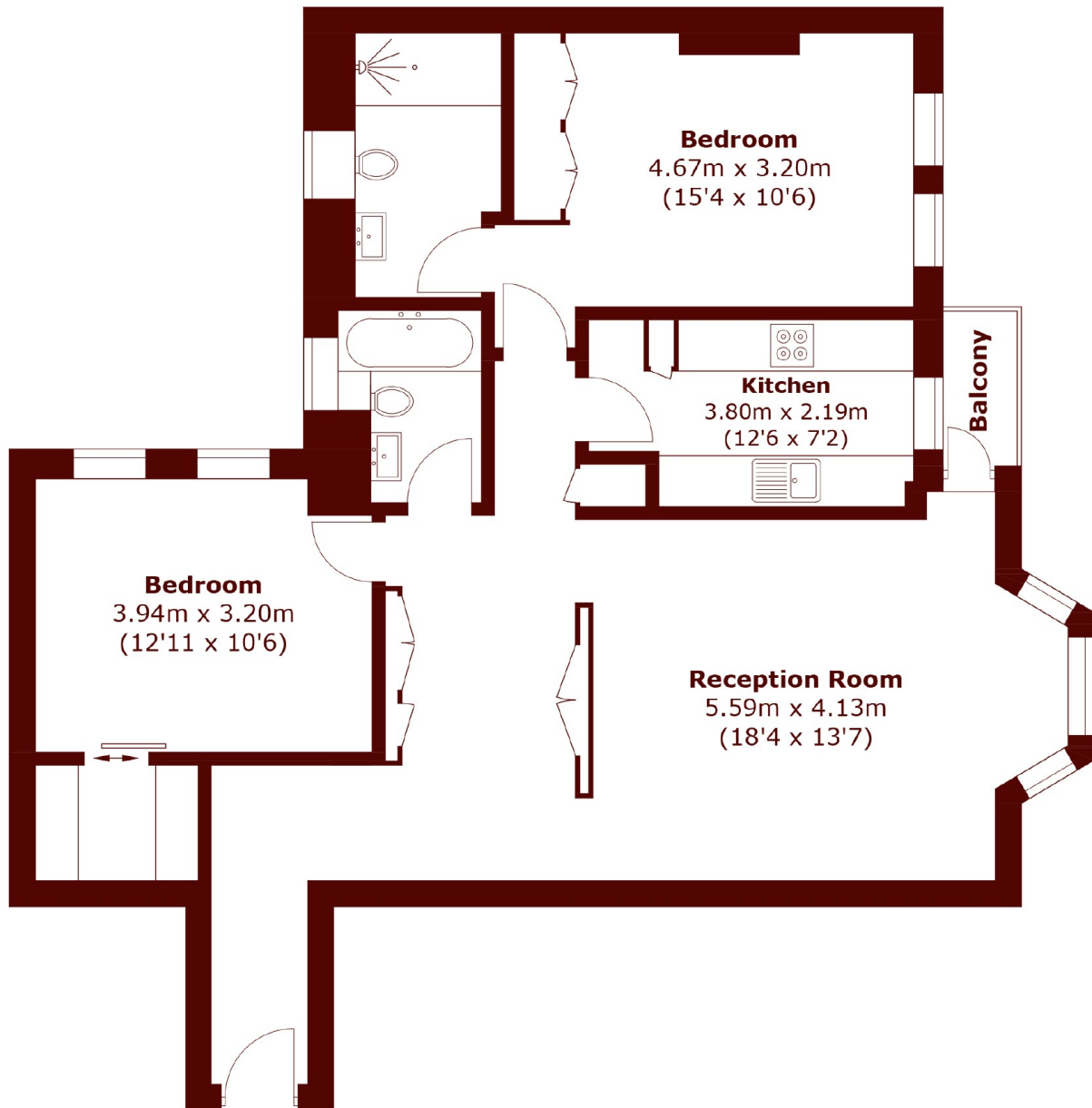
ABOUT THE PROPERTY

A two bedroom, two bathroom apartment on the third floor with garden views, balcony and a modern kitchen, moments to Kensington High Street.

This two bedroom apartment on the third floor offers garden views, a bright living room with balcony, modern kitchen, marble en-suite, walk-in wardrobe, spacious hallway, lift access, and secure underground parking.

Iverna Gardens is conveniently tucked away, moments from High Street Kensington (District Line & Circle Line) and a short stroll to the green open spaces of Kensington Gardens.





Third Floor

Total area (approx.): 91.6 sq. m (986.0 sq. ft)

Balcony : 1.5 sq. m (16.1 sq. ft)

Marsh & Parsons Kensington

9 Kensington Church Street,
London, W8 4LF
020 7368 4450