

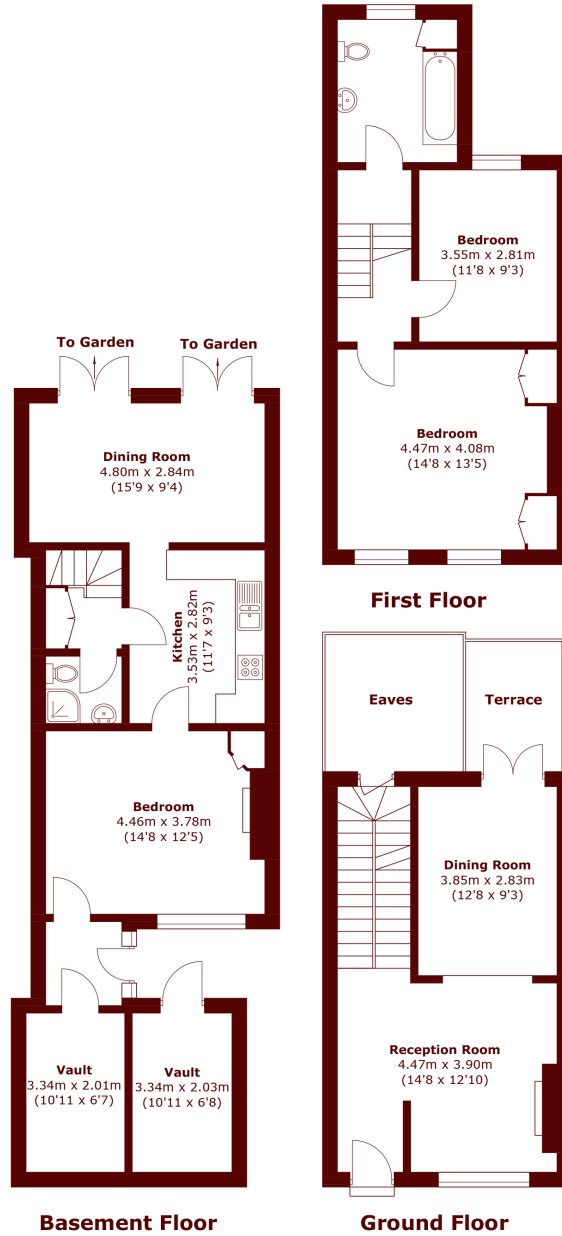


## Campden Hill Road, W8

£1,750,000



- Freehold House
- Private Garden
- Terrace
- Close to Notting Hill Station
- Unmodernised
- Three Bedrooms



**Basement Floor**  
**Ground Floor**

Total area (approx.): 141.3 sq. m (1,521.1 sq. ft)  
 Main House: 134.6 sq. m (1,449.0 sq. ft)  
 (Excluding Eaves)  
 External Vault: 6.7 sq. m (72.1 sq. ft)  
 Terrace: 5.2 sq. m (56.0 sq. ft)

## Marsh & Parsons Kensington

9 Kensington Church Street,  
 London, W8 4LF  
 020 7368 4450