

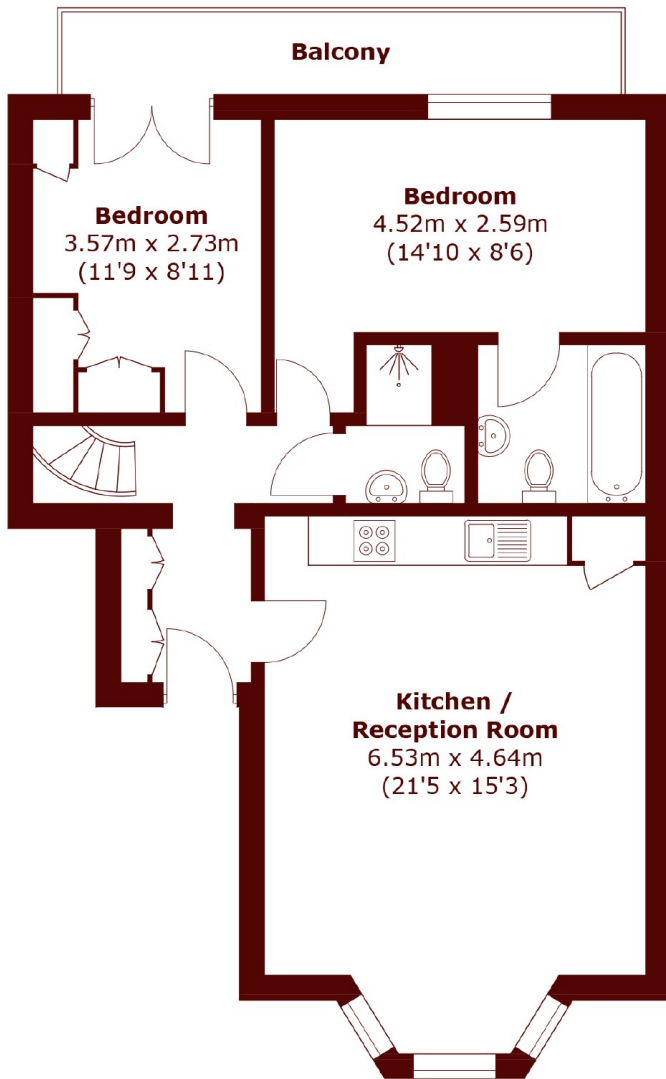


Randolph Gardens, NW6

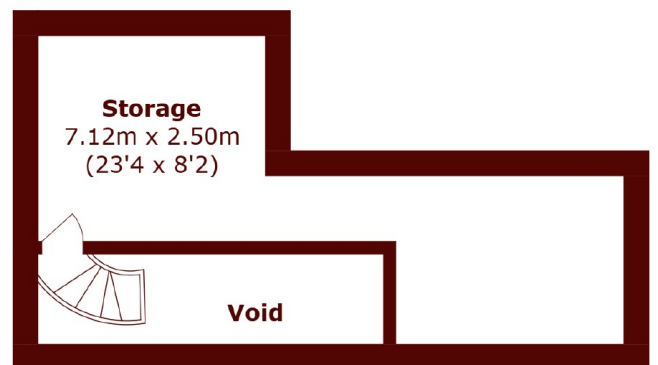
£800,000



- Two Double Bedrooms
- Raised Ground Floor
- Spacious Private Garden



Ground Floor



First Floor

Total area (approx.): 82.0 sq. m (882.5 sq. ft) (Excluding Void)
Balcony: 6.8 sq. m (73.1 sq. ft)

Marsh & Parsons Little Venice

35 Maida Vale, Maida Vale,
W9 1TP
020 7993 3050