



## Randolph Gardens, NW6

£800,000



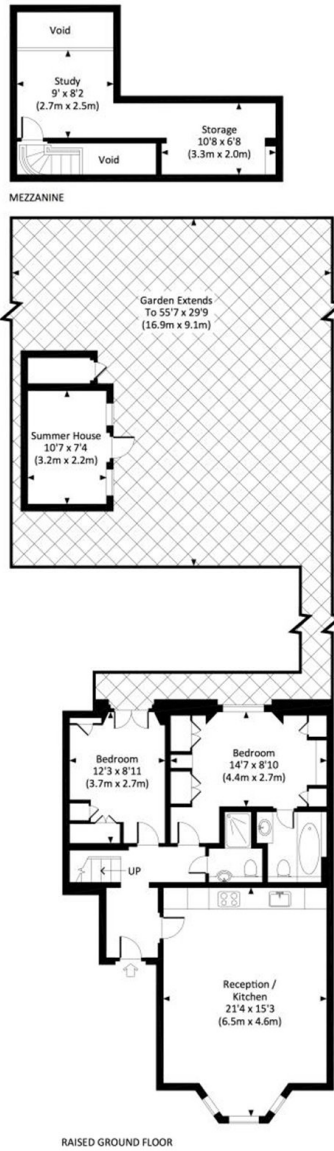
• Two Double Bedrooms

• Raised Ground Floor

• Spacious Private Garden

## RANDOLPH GARDENS, W9

Approx. gross internal area  
722.8 Sq.Ft. / 67.2 Sq.M. Mezzanine level not included  
818.4 Sq.Ft. / 76.0 Sq.M. Inc. Summer House



All measurements are approximate and for illustration purposes only as defined by theRICS Code of Measuring Practice © 2014. Dowling Jones Design www.dowlingjones.com 020 7610 9933

### Marsh & Parsons Little Venice

35 Maida Vale, Maida Vale,  
W9 1TP  
020 7993 3050

We aim to make our particulars both accurate and reliable. However, they are not guaranteed; nor do they form part of an offer or contract. If you require clarification on any points then please contact us, especially if you're traveling some distance to view. Please note that appliances and heating systems have not been tested and therefore no warranties can be given as to their good working order.