

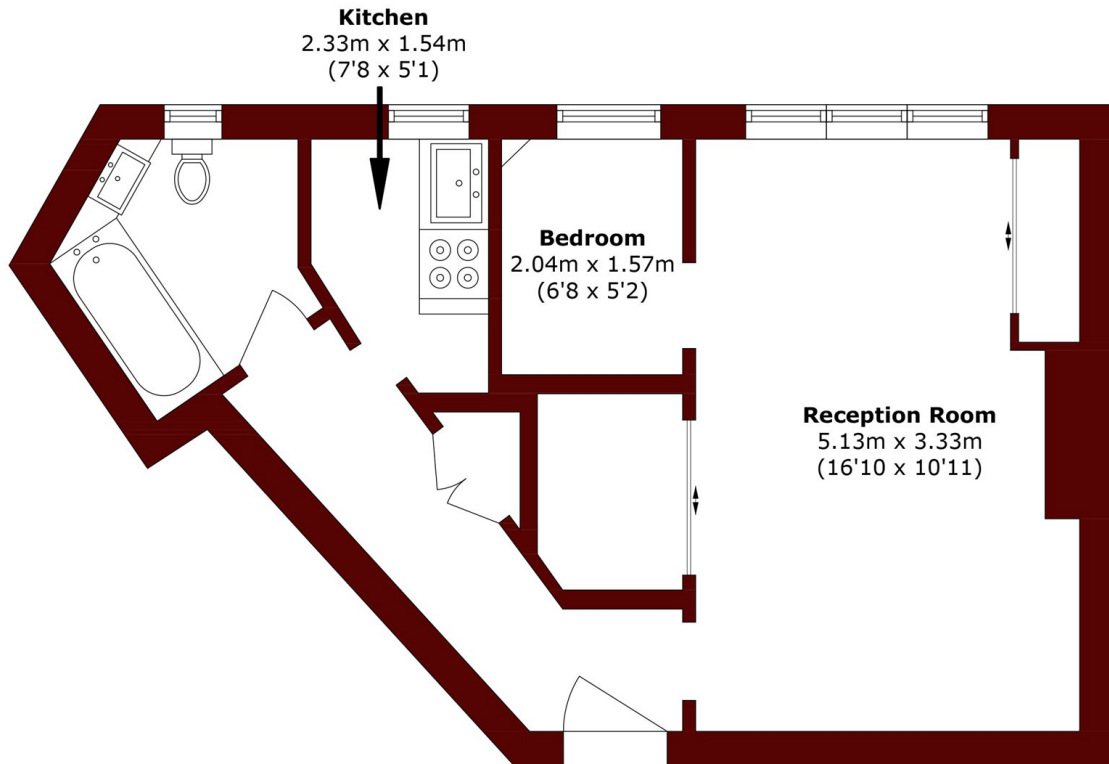


Mortimer Crescent, NW6

£325,000



- Raised ground floor apartment
- Approximately 396sq ft
- Short walk to Kilburn station
- Separate re-fitted kitchen
- Lease approximately 158 years
- Porter



Total area (approx.): 36.8 sq. m (396.1 sq. ft)

Marsh & Parsons Little Venice

35 Maida Vale, Maida Vale,
W9 1TP
020 7993 3050