



St. Johns Wood Road, NW8

£2,595,000



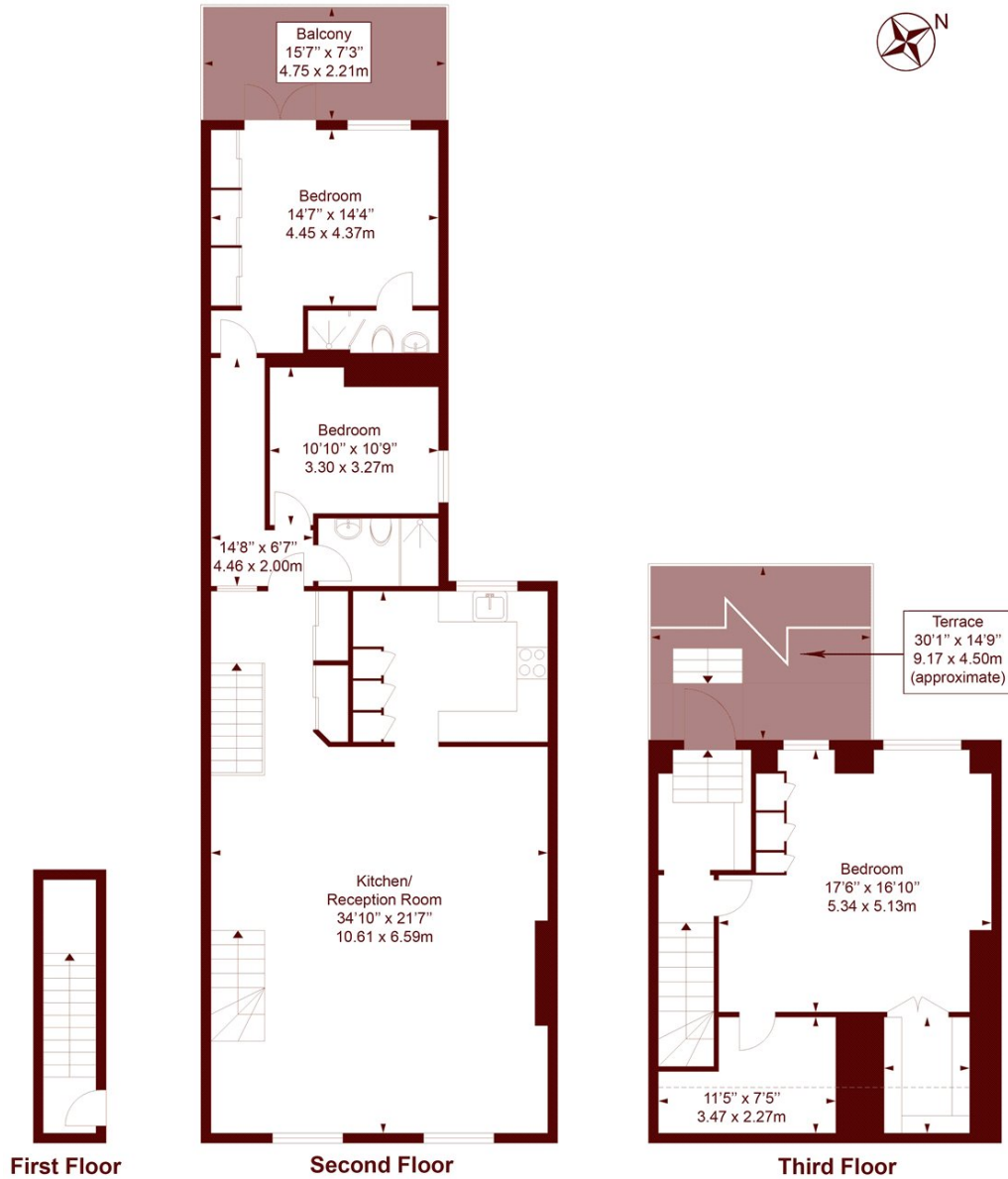
• Three bedrooms

• Three bathrooms

• Large roof terrace

St John's Wood Road

APPROX. GROSS INTERNAL FLOOR AREA: 1766 SQFT/ 164.1 SQM



Measured in accordance with RICS guidelines. Every attempt is made to ensure accuracy

However all measurements are approximate.

The floor plan is illustrative purposes only and is not to scale

ELLIE CLAIRE PHOTOGRAPHY LTD

www.ellieclairephotography.com

Marsh & Parsons Little Venice

35 Maida Vale, Maida Vale,
W9 1TP
020 7993 3050