

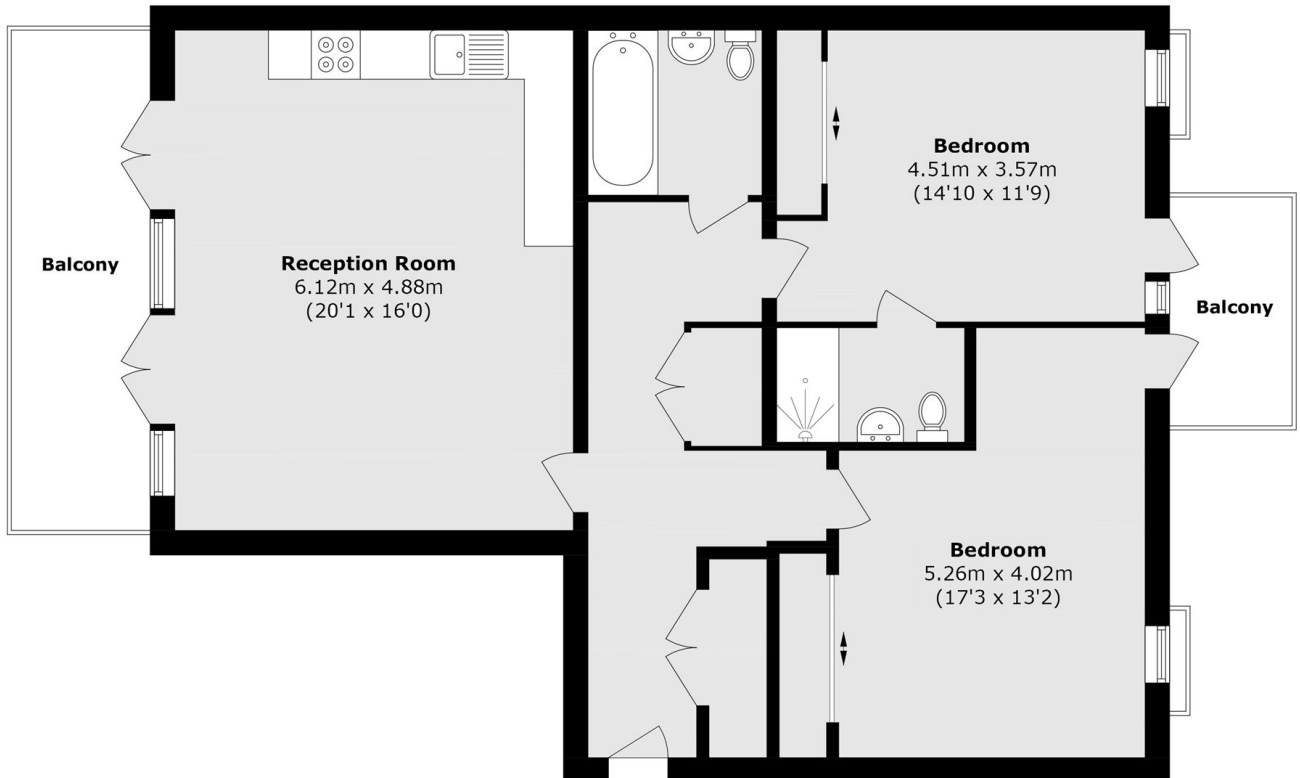


Kilburn Park Road, NW6

£820,000

2 2 1 B

- Two bedroom apartment
- Two bathrooms
- Underground parking
- Two balconies
- Underfloor heating
- Good condition



Total area (approx.): 91.6 sq. m (985.9 sq. ft)
Balcony area (approx.): 14.6 sq. m (157.1 sq. ft)

Marsh & Parsons Little Venice

35 Maida Vale, Maida Vale,
W9 1TP
020 7993 3050