

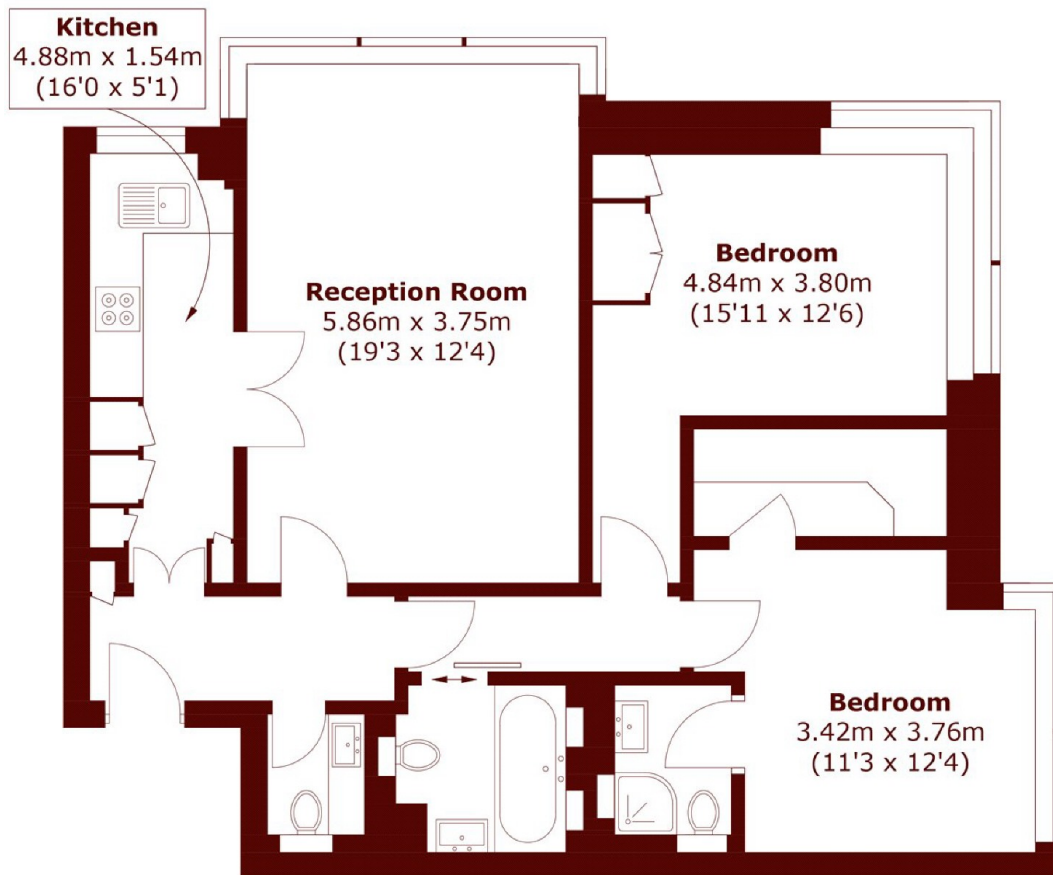


## Porchester Place, W2

£1,100,000



- Two Double Bedrooms
- Long Lease
- Lift
- Popular Development
- Amazing Views
- Porter



## Twenty First Floor

Total area (approx.): 80.2 sq. m (863.3 sq. ft)

### Marsh & Parsons Marylebone & Mayfair

94 Baker Street, London,  
W1U 6FZ  
020 7935 1775