



## Portman Mansions, W1U

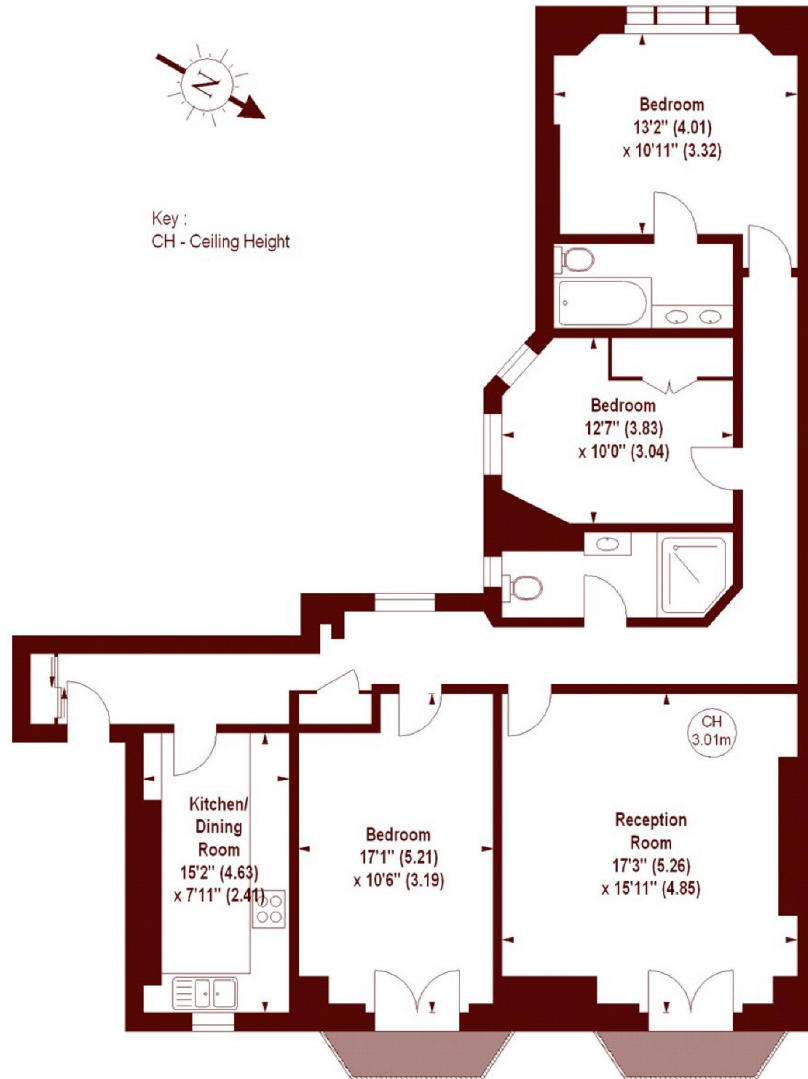
£1,384 per week (£6,000 pcm)

3 2 1 C

- Three Bedrooms
- Two Bathrooms
- Wooden Floors
- Balcony
- Porter
- Residence Gym

## Portman Mansions, W1U

APPROX. GROSS INTERNAL FLOOR AREA 1185 SQFT / 110.09 SQM



### FOURTH FLOOR

The floor plan is not to scale and measurements and areas shown are approximate and therefore should be used for illustrative purposes only. The plan has been prepared in accordance with the RICS code of Measuring Practice and whilst we have confidence in the information produced, it must not be relied on.

If there is any aspect of particular importance, you should carry out or commission your own inspection of the property.

Copyright of FeaturePRO.

### Marsh & Parsons Marylebone & Mayfair

94 Baker Street, London,  
W1U 6FZ  
020 7935 1775