



Fursecroft Court, W1H

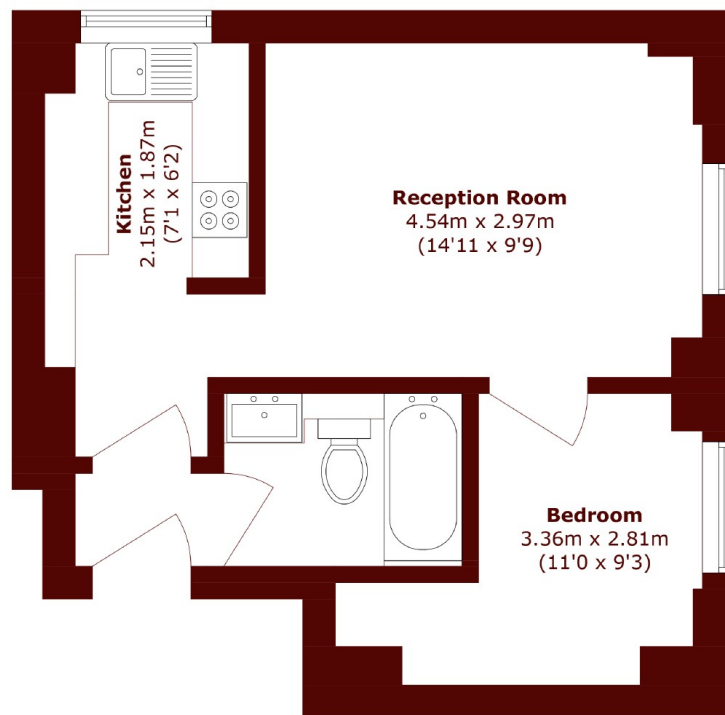
£395,000



- One Bedroom
- Newly Refurbished

- Naturally Lit
- Dual Aspect

- Modern Kitchen
- 24 Hour Porter



Lower Ground Floor

Total area (approx.): 32.2 sq. m (346.6 sq. ft)

Marsh & Parsons Marylebone & Mayfair

94 Baker Street, London,
W1U 6FZ
020 7935 1775