



Chalfont Court, NW1

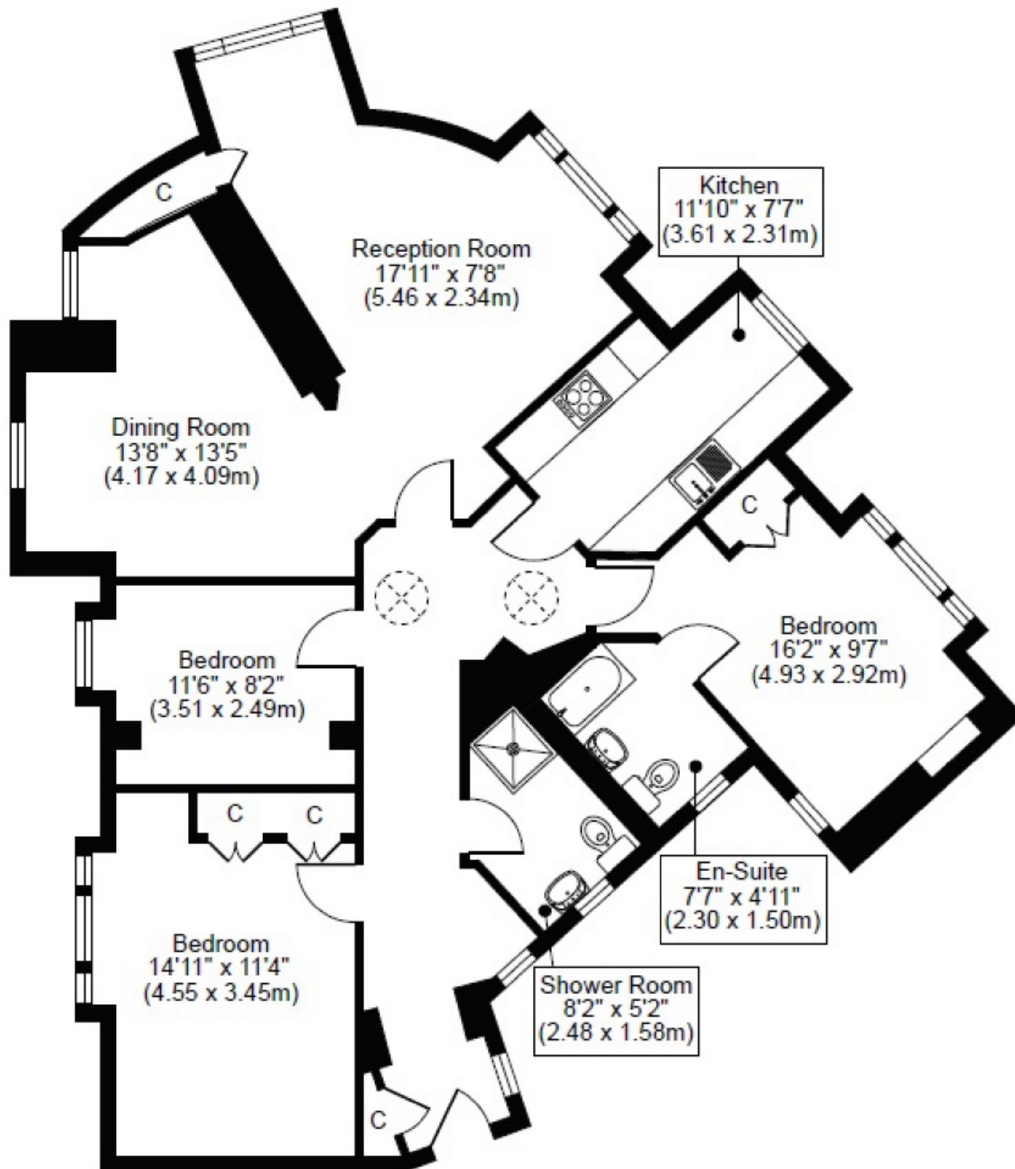
£1,475,000



- Three Double Bedrooms
- Views of Regents Park
- Top Floor With Lift
- Baker Street Station

- Brilliant Location
- Naturally Bright

CHALFONT COURT, BAKER STREET, NW1
TOTAL APPROX FLOOR PLAN AREA 1195 SQ.FT (111 SQ.M)
SIXTH FLOOR



Marsh & Parsons Marylebone & Mayfair

94 Baker Street, London,
W1U 6FZ
020 7935 1775