

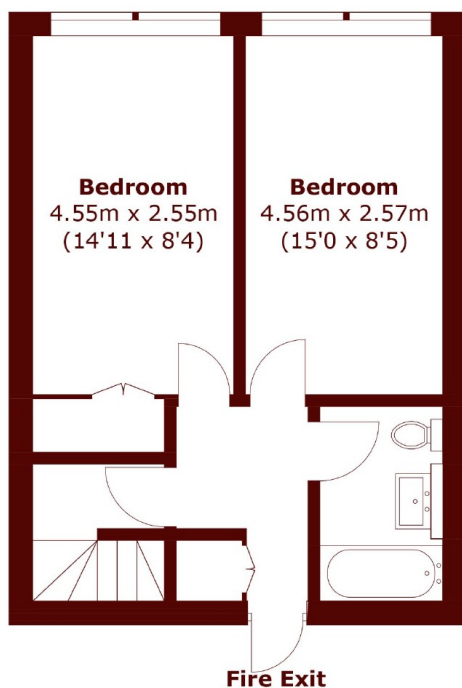


## Luxborough Street, W1U

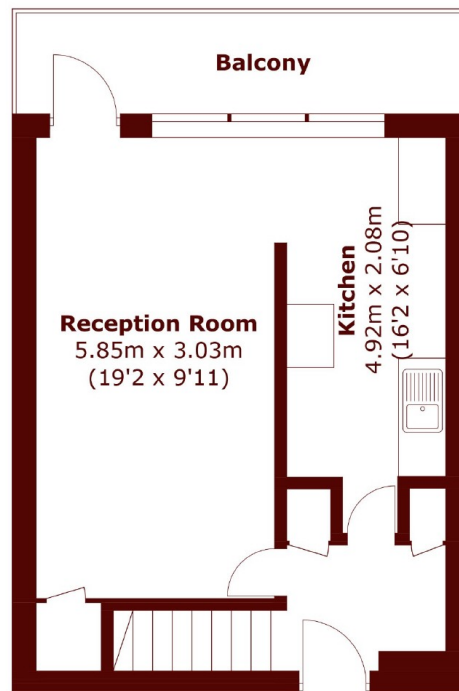
£850,000



- Two Double Bedrooms
- Private Balcony
- Beautiful Views
- Lift
- Ample of Natural Light
- Prime Marylebone



**Tenth Floor**



**Eleventh Floor**

Total area (approx.): 72.9 sq. m (784.7 sq. ft)  
Balcony: 7.3 sq. m (78.6 sq. ft)

## Marsh & Parsons Marylebone & Mayfair

94 Baker Street, London,  
W1U 6FZ  
020 7935 1775