



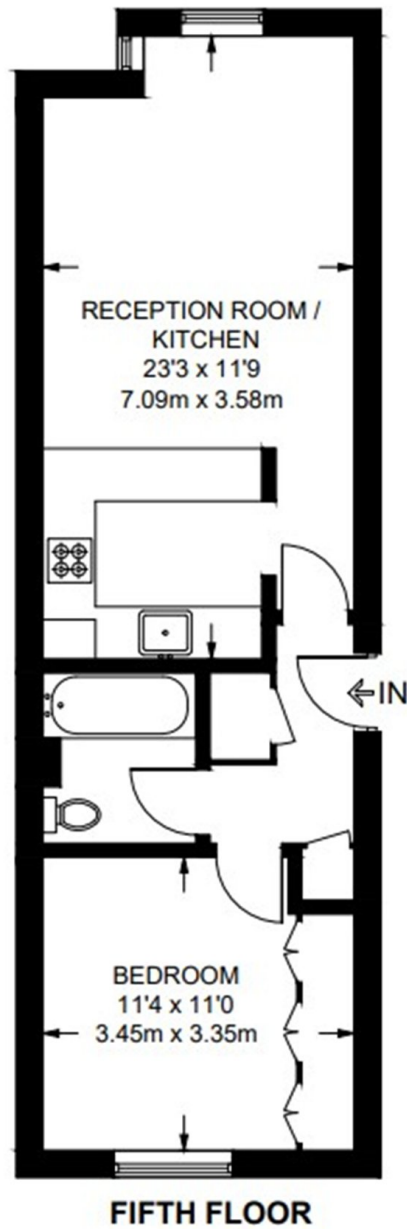
## Lisson Grove, NW1

£500,000



- One Double Bedroom
- Lift
- Share Of Freehold
- Private Gym and Pool
- Parking
- 24 Hr Porter

APPROXIMATE FLOOR AREA = 481 SQ FT / 44.7 SQ M  
INCLUDING LIMITED USE AREA (3 SQ FT / 0.3 SQ M)



## Marsh & Parsons Marylebone & Mayfair

94 Baker Street, London,  
W1U 6FZ  
020 7935 1775

We aim to make our particulars both accurate and reliable. However, they are not guaranteed; nor do they form part of an offer or contract. If you require clarification on any points then please contact us, especially if you're traveling some distance to view. Please note that appliances and heating systems have not been tested and therefore no warranties can be given as to their good working order.