



Chiltern Street, W1U

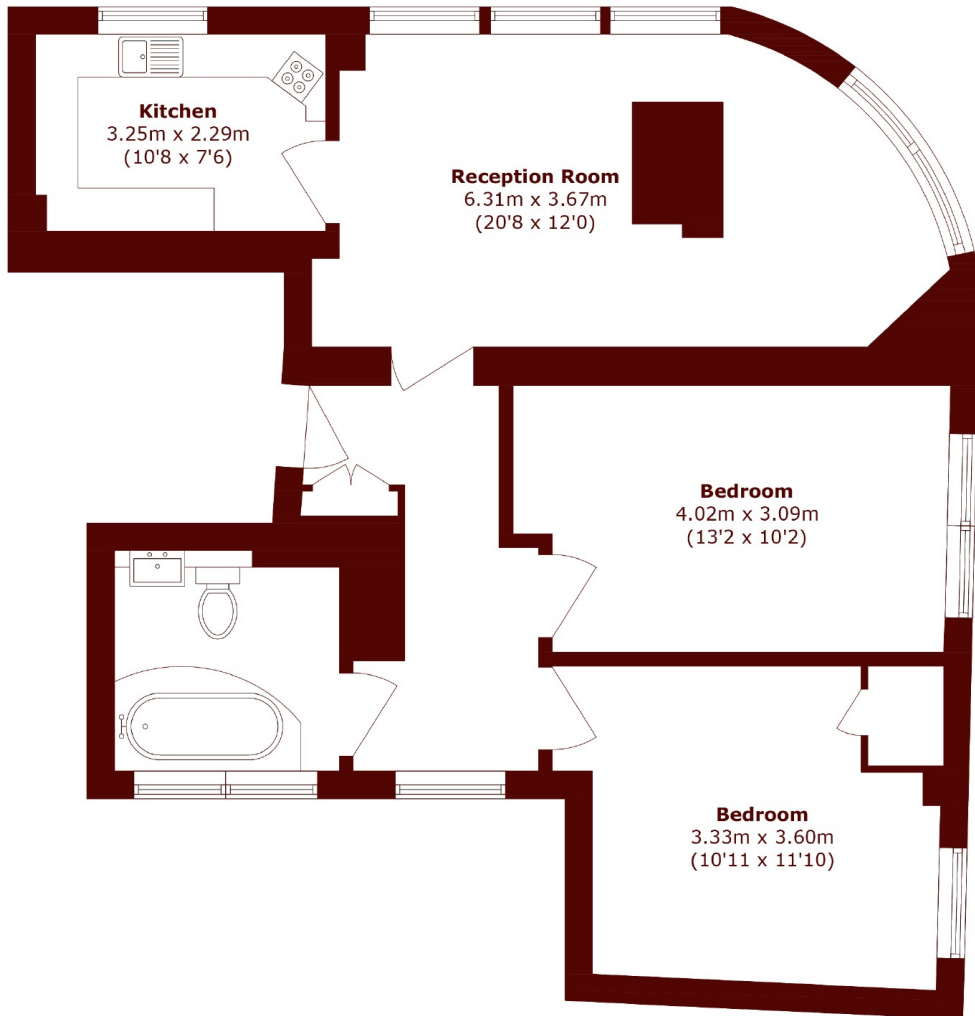
£1,000 per week (£4,766 pcm)



- Two Bedrooms
- Chiltern Street

- Wooden Floors
- Top Floor

- Feature Fireplace
- Natural Light



Third Floor

Total area (approx.): 74.6 sq. m (802.9 sq. ft)

Marsh & Parsons Marylebone & Mayfair

94 Baker Street, London,
W1U 6FZ
020 7935 1775