



Nottingham Street, W1U

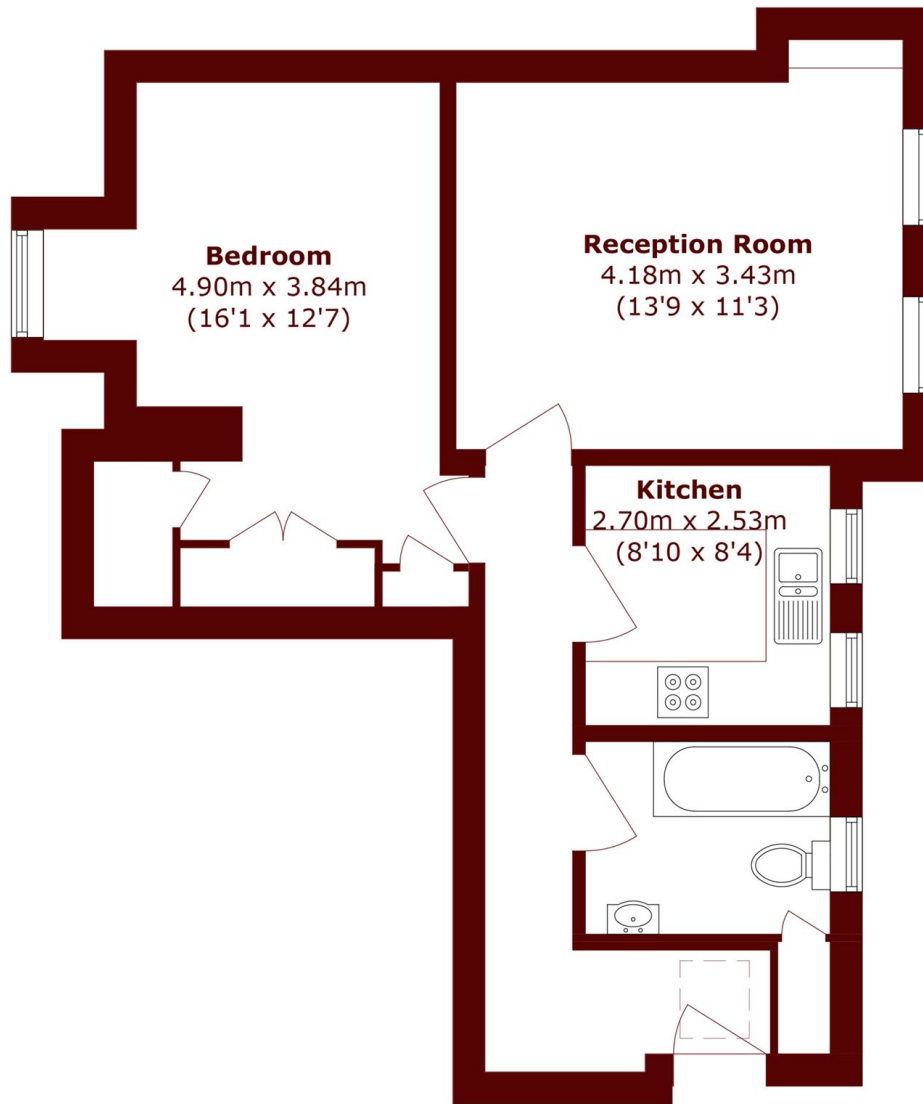
£700,000



- One Double Bedroom
- Share of Freehold

- Prime Location
- Ample Storage

- Upper Floor
- Natural Light



Fourth Floor

Total area (approx.): 49.8 sq. m (536.0 sq. ft)

Marsh & Parsons Marylebone & Mayfair

94 Baker Street, London,
W1U 6FZ
020 7935 1775