



The Water Gardens, W2

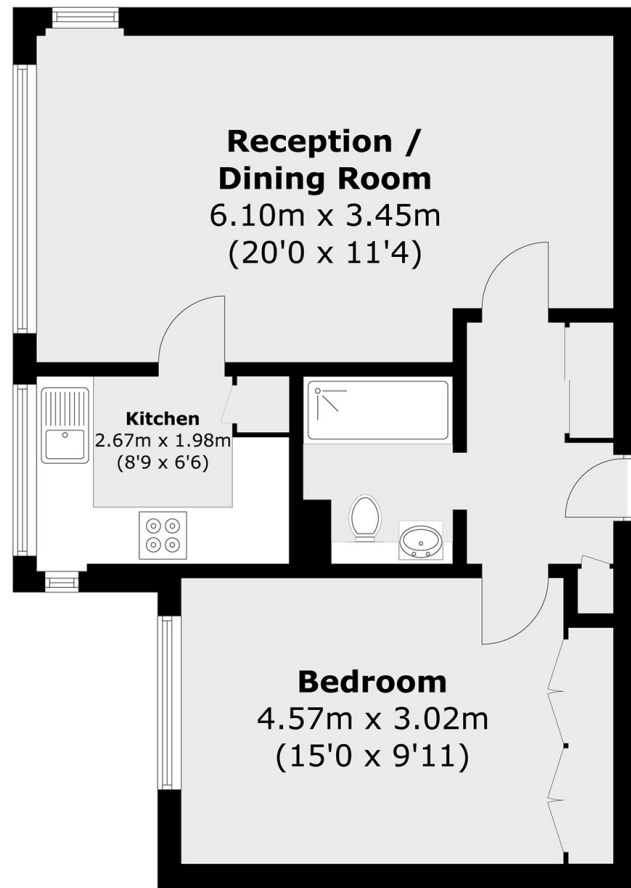
£525,000



- One Double Bedroom
- Long Lease

- Top Floor (with Lift)
- Spectacular Views

- Gated Development
- Porter



Ninth Floor

Total area (approx.): 48.6 sq. m (523.1 sq. ft)

Marsh & Parsons Marylebone & Mayfair

94 Baker Street, London,
W1U 6FZ
020 7935 1775