

Park Road, NW1

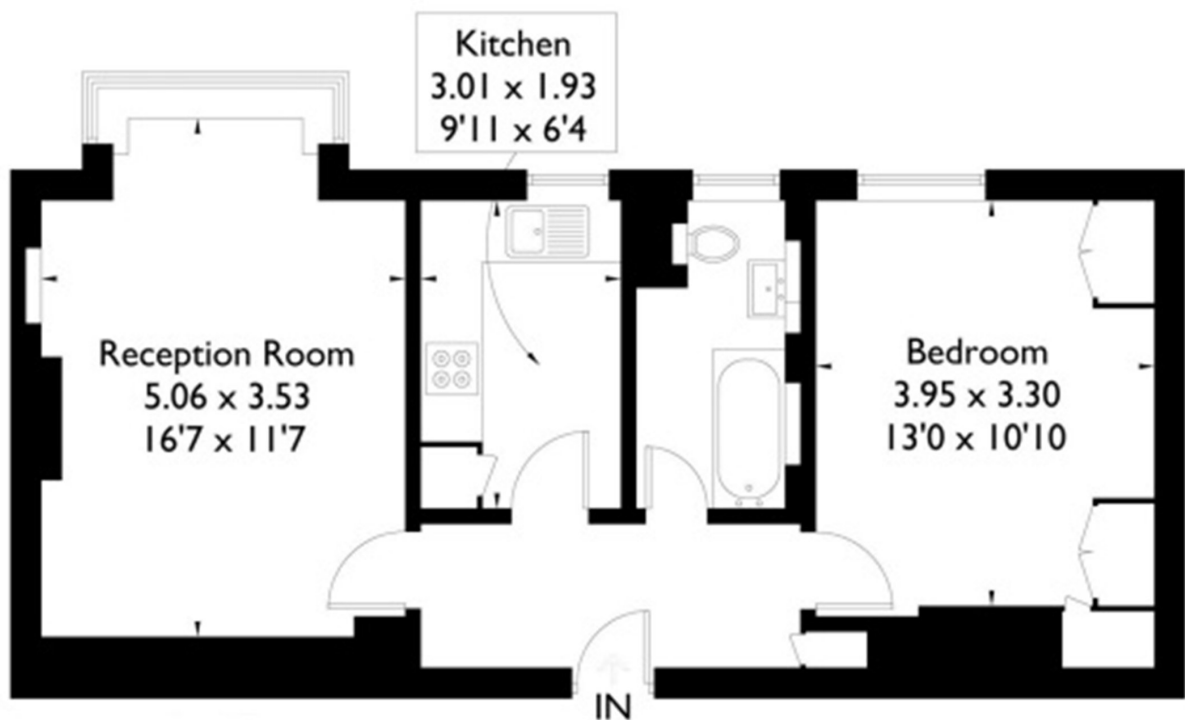
£640,000



- One Double Bedroom
- Long Lease
- Seventh Floor
- Regents Park
- Baker Street Station
- Modern Finish

Rossmore Court, Park Road, NW1

Approximate Gross Internal Area
48.8 sq m / 525 sq ft



Marsh & Parsons Marylebone & Mayfair

94 Baker Street, London,
W1U 6FZ
020 7935 1775

We aim to make our particulars both accurate and reliable. However, they are not guaranteed; nor do they form part of an offer or contract. If you require clarification on any points then please contact us, especially if you're traveling some distance to view. Please note that appliances and heating systems have not been tested and therefore no warranties can be given as to their good working order.