



Montagu Mews South, W1H

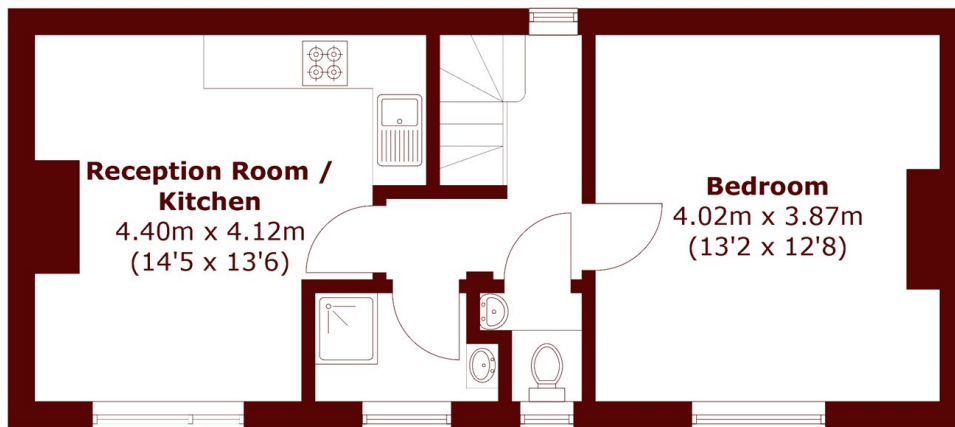
£1,500 per week (£6,500 pcm)



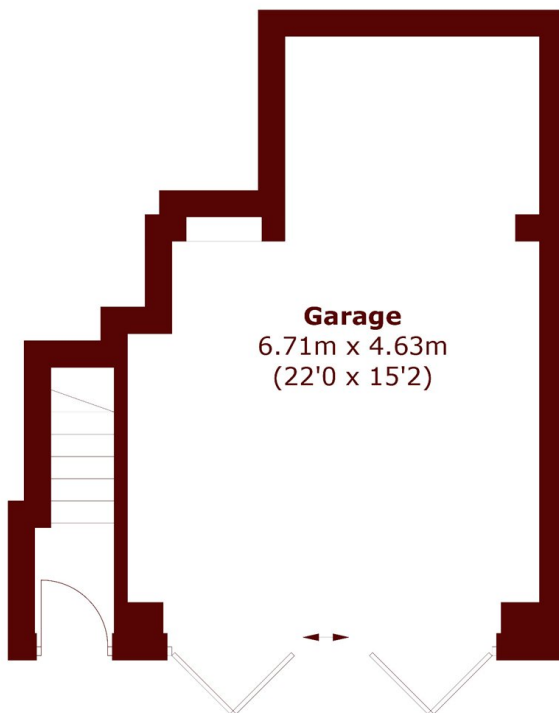
- Mews House
- Prime Marylebone

- Newly Refurbished
- Two Double Bedrooms

- Modern
- Unfurnished



First Floor



Ground Floor

Approx Internal Area: 44.4 sq. m (477.9 sq. ft)
Garage: 26.9 sq. m (289.5 sq. ft)
Total: 71.3 sq. m (767.4 sq. ft)

Marsh & Parsons Marylebone & Mayfair

94 Baker Street, London,
W1U 6FZ
020 7935 1775