



Clanricarde Gardens, W2

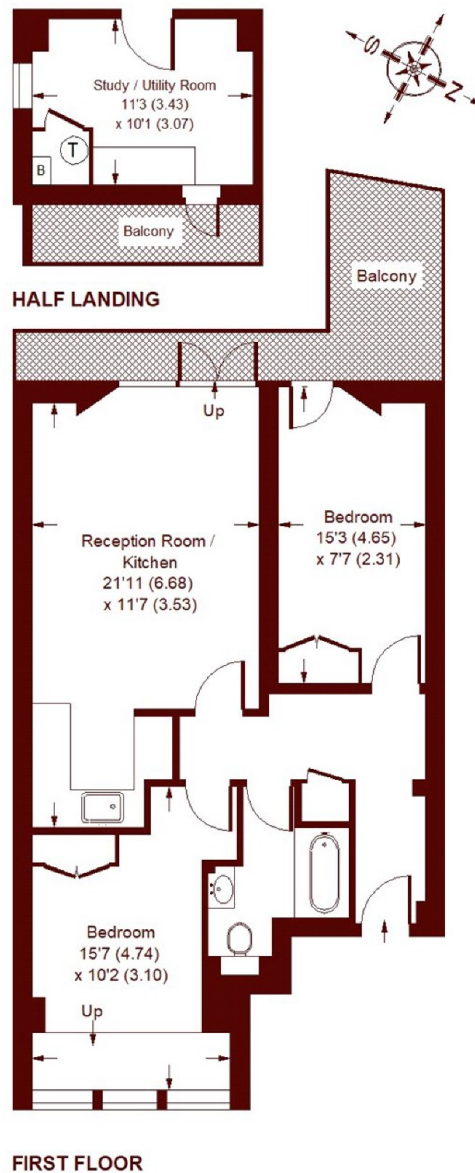
£895,000



- Stunning Period Features
- Generous Westerly Terrace
- Separate Annex Room
- Ideally Positioned
- High Ceilings
- Grand Reception

Clanricarde Gardens, W2

APPROX. GROSS INTERNAL FLOOR AREA = 641 SQFT / 59.6 SQM
 HALF LANDING = 114 SQFT / 10.6 SQM
 TOTAL = 755 SQFT / 70.2 SQM



Whilst every attempt has been made to ensure the accuracy of the floor plan, measurements are approximate and not to scale.
 No guarantee is given on the total square footage of the property quoted on the plan. Figures given are for guidance.
 Plan is for illustration purposes only, not to be used for valuations.

Marsh & Parsons Notting Hill

2-6 Kensington Park Road,
 London, W11 3BU
 020 7313 2890