



Wilby Mews, W11

£2,400,000



- High Pitched Ceilings
- Stunning Facade


- Cobbled Mews
- Prime Notting Hill

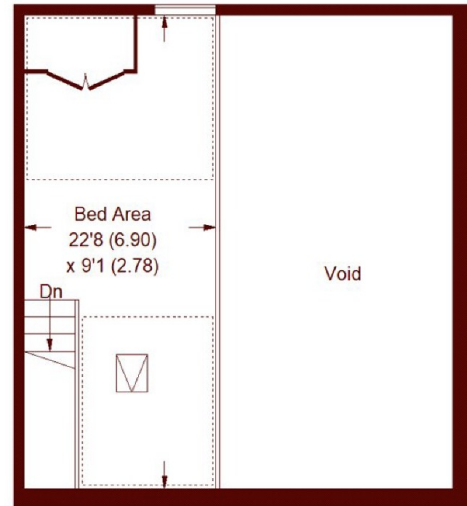
- Excellent Condition
- Access to Private Garden

Wilby Mews, W11

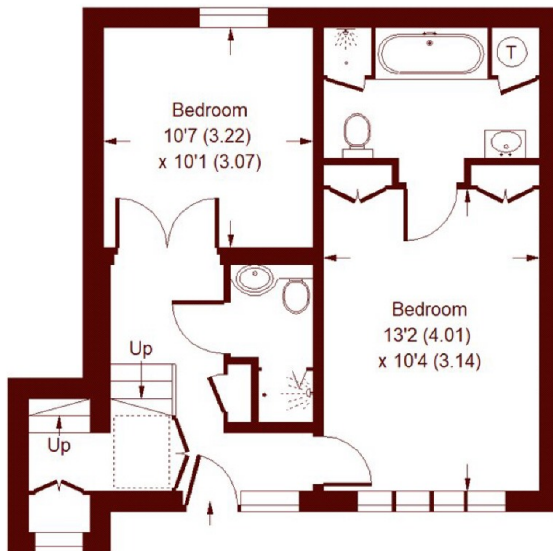
APPROX. GROSS INTERNAL FLOOR AREA
1180 SQFT / 109.6 SQM
(EXCLUDING VOID)



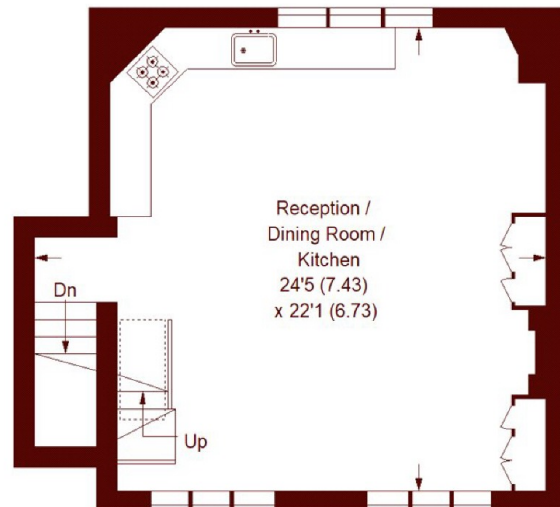
 = REDUCED HEADROOM
BELOW 1.5 M / 5'0



MEZZANINE



GROUND FLOOR



FIRST FLOOR

Whilst every attempt has been made to ensure the accuracy of the floor plan, measurements are approximate and not to scale.
No guarantee is given on the total square footage of the property quoted on the plan. Figures given are for guidance.
Plan is for illustration purposes only, not to be used for valuations.

Marsh & Parsons Notting Hill

2-6 Kensington Park Road,
London, W11 3BU
020 7313 2890