



Sunderland Terrace, W2

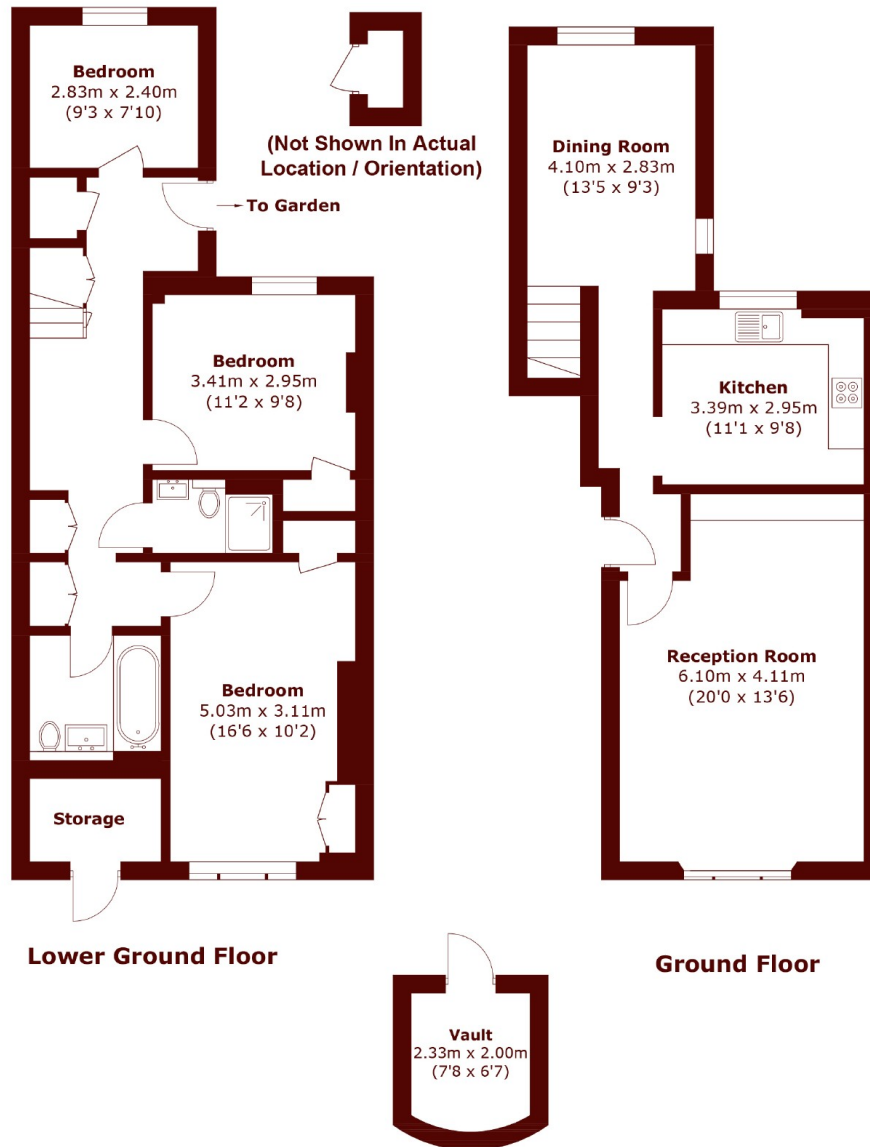
£1,395 per week (£6,045 pcm)



- Three Bedrooms
- Two Bathrooms

- South Facing Garden
- Wooden Floors

- Office
- Newly Refurbished



Lower Ground Floor
Total area (approx.): 119.0 sq. m (1,280.9 sq. ft)
Storages: 4.1 sq. m (44.1 sq. ft)

Marsh & Parsons Notting Hill

2-6 Kensington Park Road,
London, W11 3BU
020 7313 2890