



## Chepstow Road, W2

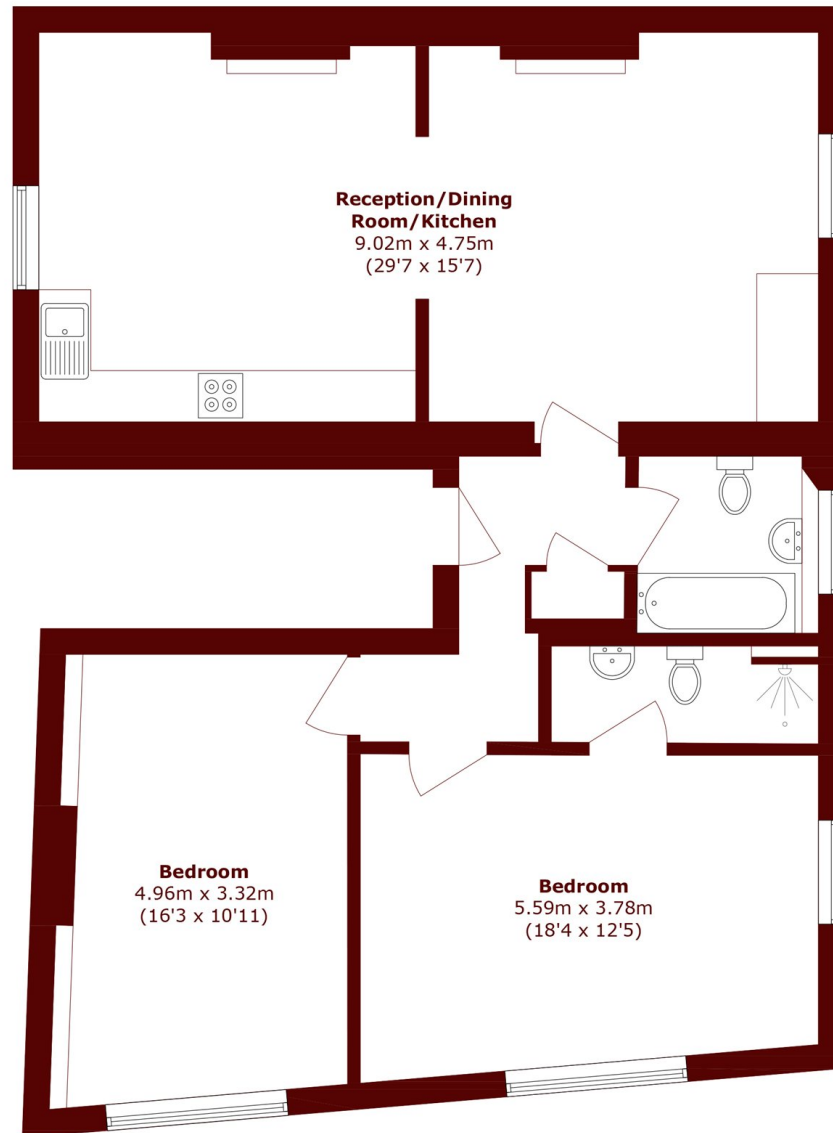
£1,153 per week (£4,996 pcm)



- First Floor Apartment
- Two Double Bedrooms

- Two Bathroom
- Natural Light

- Wooden Floors
- Envious Location



## First Floor

Total area (approx.): 96.0 sq. m (1033.3 sq. ft)

### Marsh & Parsons Notting Hill

2-6 Kensington Park Road,  
London, W11 3BU  
020 7313 2890