



Dunworth Mews, W11

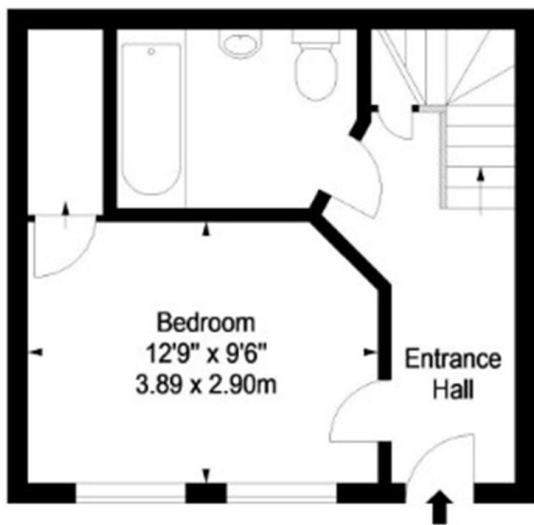
£980 per week (£4,400 pcm)



- Gated Mews
- Two Double Bedrooms

- Two Bathrooms
- Wooden Floors

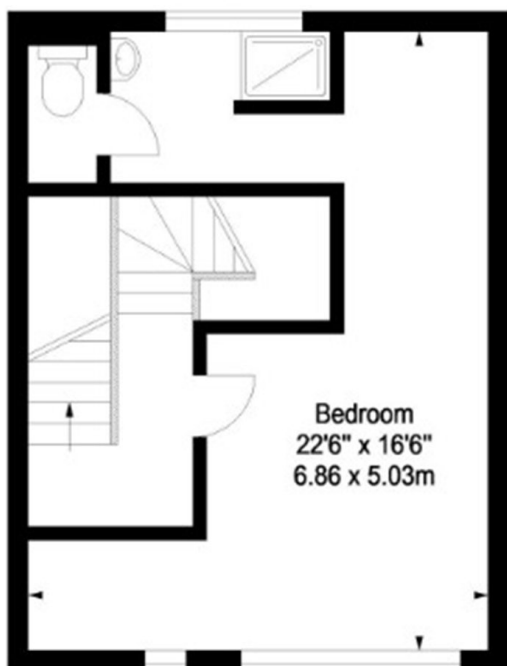
- Plenty of Natural light
- Communal paved terrace



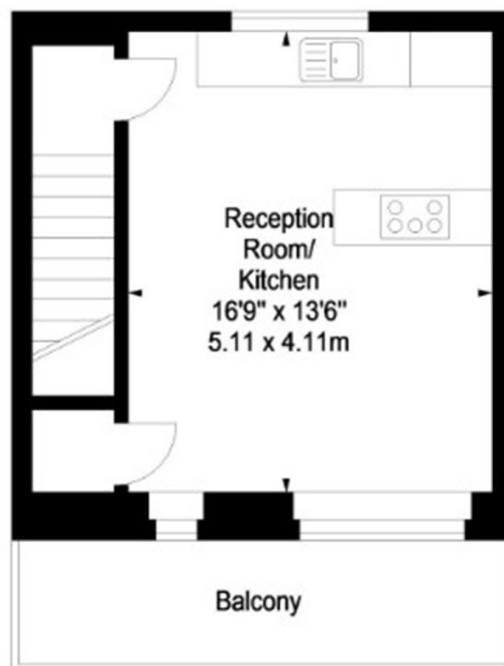
Dunworth Mews, W11
Approx. Gross Internal Area
959 Sq Ft - 89.09 Sq M



Ground Floor



First Floor



Second Floor

Measured in accordance with RICS guidelines. Every attempt is made to ensure accuracy, however all measurements are approximate. This floor plan is for illustrative purposes only and is not to scale.
© Datagraphy Ltd 2008
Photographs * Floorplans * Virtual Tours
Tel: 08707 66 30 30 www.datagraphy.com

Marsh & Parsons Notting Hill

2-6 Kensington Park Road,
London, W11 3BU
020 7313 2890

We aim to make our particulars both accurate and reliable. However, they are not guaranteed; nor do they form part of an offer or contract. If you require clarification on any points then please contact us, especially if you're traveling some distance to view. Please note that appliances and heating systems have not been tested and therefore no warranties can be given as to their good working order.