

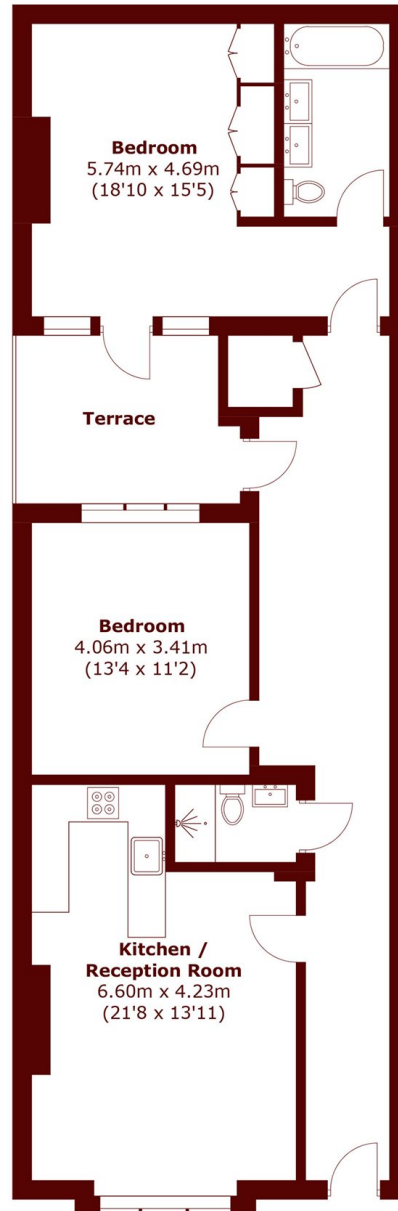


## Queens Gardens, W2

£1,200 per week (£5,200 pcm)



- Two Bedroom
- Two Bathroom
- Patio
- Large Living Room
- Wooden Flooring
- Communal Gardens



## Lower Ground Floor

Total area (approx.): 96.3 sq. m (1,036.6 sq. ft)  
Terrace area (approx.): 9.2 sq. m (99.0 sq. ft)

### Marsh & Parsons Notting Hill

2-6 Kensington Park Road,  
London, W11 3BU  
020 7313 2890