



## Pembridge Villas, W11

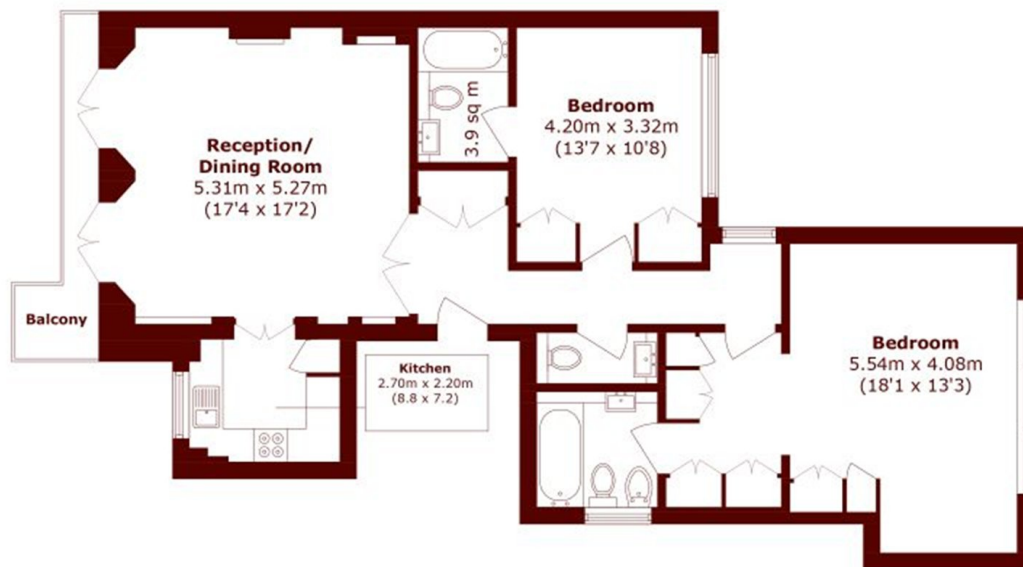
£1,490 per week (£6.456 pcm)

2 2 1 C

- Two bedrooms
- Two bathrooms

- First Floor
- Balcony

- High Ceilings
- Prestigious location



Total area (approx.): 101.0 sq. m (1087.1 sq. ft)  
Balcony area (approx.): 5.0 sq. m (53.8 sq. ft)

## Marsh & Parsons Notting Hill

2-6 Kensington Park Road,  
London, W11 3BU  
020 7313 2890