

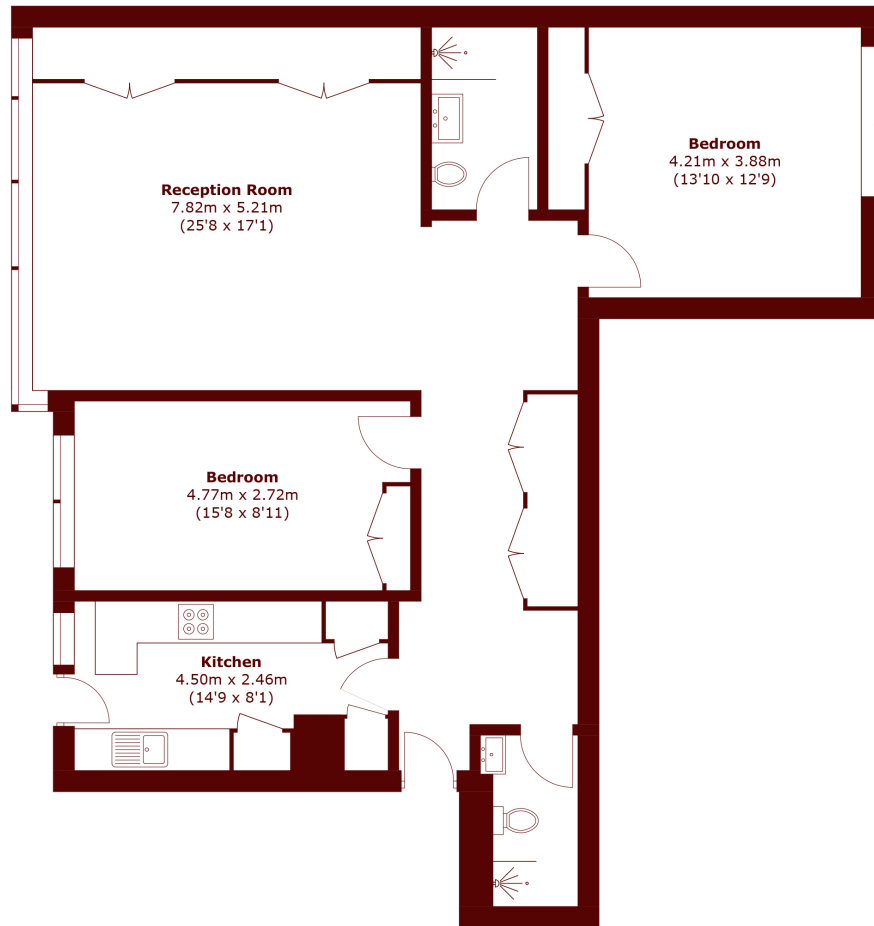


The Quadrangle, W2

£950 per week (£4,116 pcm)



- Two Bedrooms
- Natural Light
- Communal Gardens
- 24 Hour Porter
- Lift Access
- Envious location



Total area (approx.): 98.8 sq. m (1,063.5 sq. ft)

Marsh & Parsons Notting Hill

2-6 Kensington Park Road,
London, W11 3BU
020 7313 2890