



St Stephens Gardens, W2

£935,000



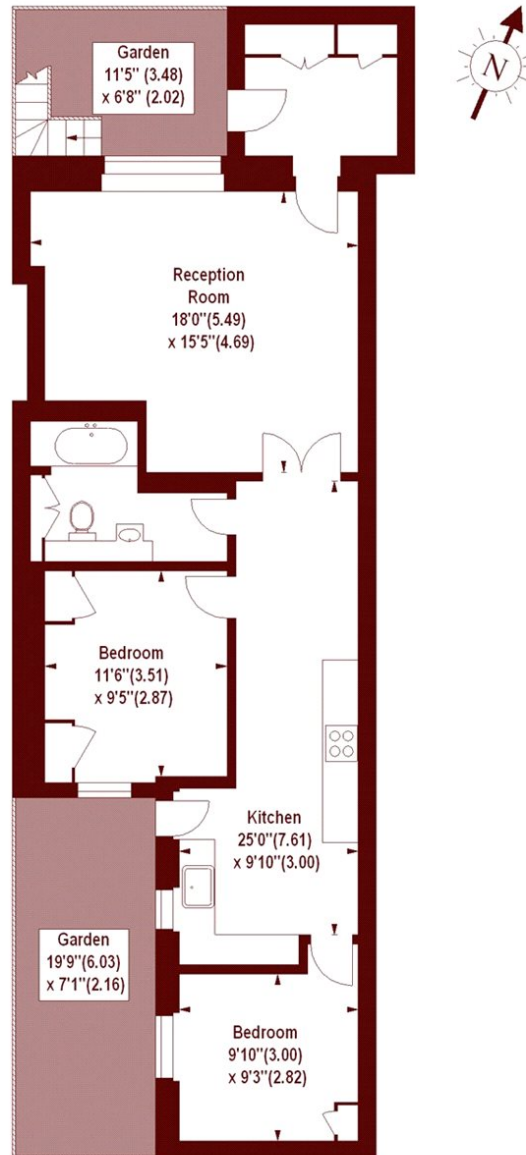
- Quiet Garden Square
- Excellent Condition

- No Onward Chain
- Share Of Freehold

- Private Entrance
- High Ceilings

St. Stephens Gardens, W2

APPROX. GROSS INTERNAL FLOOR AREA 837 SQFT / 77.76 SQM



LOWER GROUND FLOOR

Illustration For Identification Purposes Only. Not To Scale

*Floorplan Drawn According To RICS Guidelines
Copyright of FeaturePRO

Marsh & Parsons Notting Hill

2-6 Kensington Park Road,
London, W11 3BU
020 7313 2890