



Westbourne Grove, W11

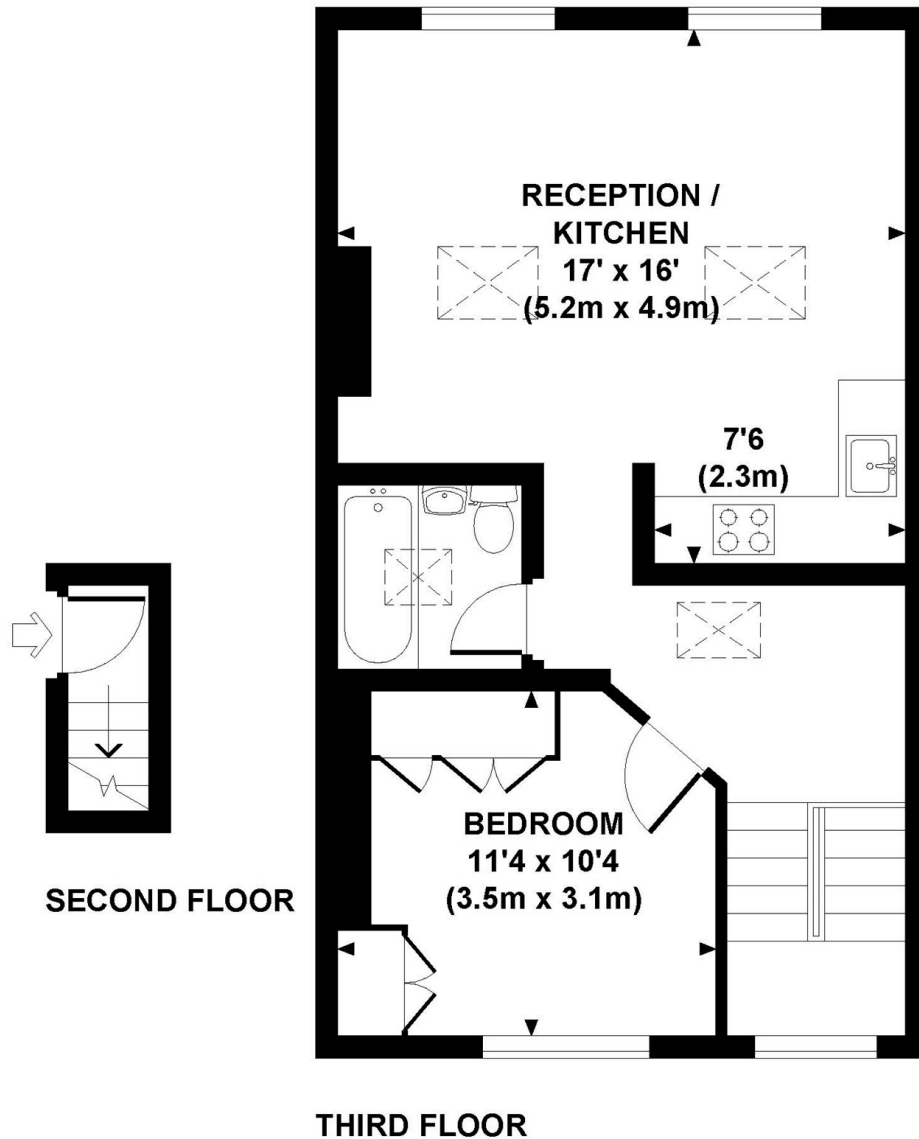
£700,000



- One Double Bedroom
- No Onward Chain
- Leasehold Property
- Vaulted Ceilings
- Top Floor Flat
- Fantastic Location

WESTBOURNE GROVE, W11

Approx. gross internal area
529 Sq Ft. / 49 Sq M.



All measurements are approximate and for illustration purposes
only as defined by the RICS Code of Measuring Practice © 2012
Dowling Jones Design www.dowlingjones.com 020 7610 9933

Marsh & Parsons Notting Hill

2-6 Kensington Park Road,
London, W11 3BU
020 7313 2890

We aim to make our particulars both accurate and reliable. However, they are not guaranteed; nor do they form part of an offer or contract. If you require clarification on any points then please contact us, especially if you're traveling some distance to view. Please note that appliances and heating systems have not been tested and therefore no warranties can be given as to their good working order.